

When a single outdoor unit makes the entire house cool and refreshing,

Imagination *lives*

Imagination *lives*



Less electricity, smaller outdoor unit and easy maintenance, Experience all the advantages of Samsung's Free Joint Multi air conditioner.



Space for Partnership

Samsung Electronics Co., LTD.

Head Office (Suwon Korea) 416, Maetan-3Dong, Yeongtong-Gu, Suwon City, Gyeonggi-Do, Korea 443-742
www.dvmsystem.com

Ver.1



SAMSUNG



Economic solution for residential buildings^o

Samsung's Free Joint Multi Air Conditioner supports various combinations of indoor and outdoor units. A single outdoor unit supporting up to four indoor units can be more economic and installation can get a lot simpler. Samsung's Free Joint Multi is the economic solution for all the residential buildings

SAMSUNG ELECTRONICS HOME APPLIANCE PRODUCT AWARDS

Technology can contribute to the development of a greener, cleaner world and increase quality of life. This is a philosophy we have held at Samsung for over 30 years. Ever since its establishment in 1973, Samsung Electronics has concentrated on developing environmentally friendly products and has converged increasingly sophisticated digital technology with its appliance products to attain a strong technological advantage in improving consumers' quality of living with the ultimate in convenience and style.



2009 SAMSUNG Free Joint Multi Air Conditioner



Contents

INTRODUCTION	02
BRAND VALUE	05
PRODUCT LINE-UP	11
OUTDOOR UNITS	12
INDOOR UNITS	16
CAPACITY COMBINATION	26
CONTROL SYSTEMS	34

Big Confidence Global Leading Company >> SAMSUNG

Since day one, Samsung Electronics has committed itself to becoming a leader in every facet of its market initiatives. The result is the growth of a brand that's synonymous with impeccable standards, high quality products, and an unwavering dedication to the customer. Through continuous creativity and the development of highly innovative products, Samsung has captured the hearts and minds of customers worldwide, which will propel our company and our brand well into the future.

SAMSUNG'S BRAND VALUE

In the Digital era, products are being distinguished by their brand in addition to their functions or quality. In 1999 Samsung Electronics has implemented its global brand communication strategy. Since then, based on the research conducted by Interbrand INC., USA, Samsung Electronics has become one of the fastest growing brands equities from 6.4 billion USD (2001) to over 17.7 billion USD (2008) and is now ranked 21st on Interbrand's Top100 Global Brand List.

Samsung has increased its value by emphasizing technology as a life innovator. Samsung will remain close to the customer through its technologies contributing to a higher quality of life.

- 1 Coca-Cola
- 2 Microsoft
- 3 IBM
- 11 Citi Bank
- 21 SAMSUNG
- 22 Merrill Lynch
- 25 Sony
- 29 Nike



GLOBAL BUSINESS NETWORK

Samsung's thrust on Product Innovation and R&D has given the company a competitive edge in the marketplace. With an investment of over USD 4.59 billion, Samsung operates 16 R&D centers worldwide and employs 27,000 researchers of which 2,500 hold a Ph. D. As a result, Samsung has already applied for 1600 patents in the USA. The focus of the R&D center is to customize electronics products to meet the Specific needs of consumers in that region. Samsung R&D Centers are helping the company to continuously innovate and introduce products customized for today's global market.



Thinking of You.

"A global leader is not only responsible for that which lies within its walls but also for that which lies beyond them."

Making industry-leading products is only part of the big picture. Our commitment to creating a better world for future generations is equally as important. We strongly believe that if future generations aren't given the opportunity to succeed, we definitely won't. As a corporate citizen, we have dedicated ourselves to nurturing our local communities through corporate social responsibility and co-prosperity initiatives. Samsung has also remained steadfast when it comes to supporting education initiatives, helping to preserve the "greening" of the planet where you live.

BETTER
↑
↓
BAD

- 7 **Nokia:**Clear leader after improving take-back in India.
- 5.7 **SAMSUNG /** Good scores on chemicals and e-waste criteria.
- 5.5 **Fujitsu Siemens:**New deadline for removal of BFRs and PVC but still poor on recycling.
- 5.3 **Sony Ericsson:**Good on toxic chemicals and energy but very poor on recycling.
- 5.3 **Sony:**Good on toxic chemicals, room for improvement on energy.
- 4.9 **LG:**Improved score on recycling and energy.
- 4.7 **Toshiba:**Improved climate policy, but poor on recycling.
- 4.7 **Dell:**Dropping down with poor scores on climate policy.
- 4.7 **HP:**Slightly improved score but no products free of most toxic chemicals.
- 4.5 **Acer:**Good on chemicals policy but poor on energy policy.
- 4.5 **Panasonic:**Needs to improve recycling and amount of renewable energy.
- 4.3 **Philips:**Worst company on recycling with additional penalty for negative lobbying in Europe.
- 4.1 **Apple:**Progress on eliminating toxics from new products but needs to improve on recycling and energy.
- 4.1 **Lenovo:**New US tack back scheme, but still no products free of worst toxic chemicals.
- 3.7 **Motorola:**Only phone company not to set a timeline for eliminating worst toxic chemicals.
- 3.1 **Sharp:**Most points on toxic chemicals, poor on recycling and energy.
- 2.2 **Microsoft:**Very poor on recycling and energy.
- 0.8 **Nintendo:**Zero on most criteria except chemicals management and energy.

[Standard for the second quarter, 2008]

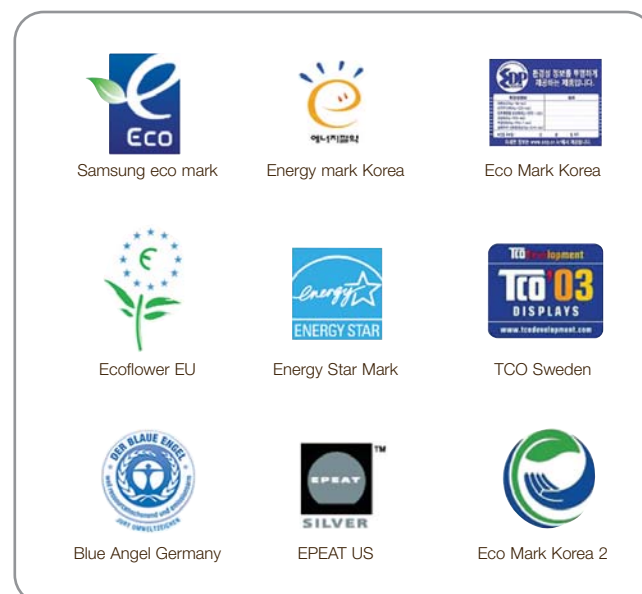
Reported by Greenpeace

Samsung comes in second place with 5.7, scoring well on chemicals and waste criteria. Samsung's score on e-waste is helped by getting top marks for reporting recycling rates of 137% for TVs (based on past sales 10 years ago, the average life span, since when Samsung's TV sales have increased 10-fold), 12% for PCs (based on 7 year lifespan) and 9% for mobile phones (based on 2 year lifespan). It also scores well on its use of recycled plastic, which is 16.1%, though only 0.2% is post-consumer plastic, with a goal to increase to 25% by 2008.

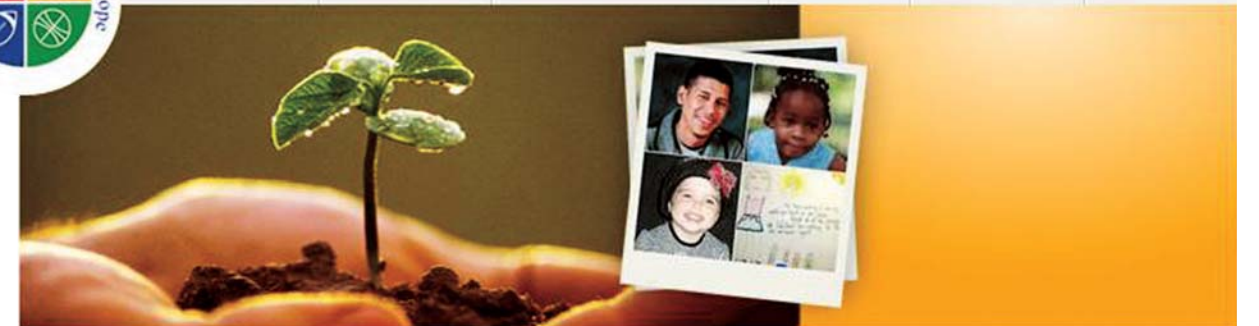
Eco-labels & Declaration

Samsung Electronics makes an effort to develop environment-friendly products that minimize the negative impacts on the environment in every aspect of its products, from raw material procurement, production, transportation, usage, and final disposal. Concerns for the environment are at the core of each product development.

Samsung's environment-friendly technologies and recycling programs have received global approval, receiving well-known awards and recognitions worldwide.



Stars & Foundations | Stories of Hope | Special Events & Promotions | Press Room | How Can I Help? | Retail Partners



Welcome to Samsung's Four Seasons of Hope, a Philanthropic program presented by Samsung Electronics America, Inc.

"A little hope can make a big difference."

Four Seasons of Hope

Samsung's Four Seasons of Hope is about kids. It's about using the power of our brand to give something back to the communities we serve.

Samsung's Four Seasons of Hope supports community-based foundations and charities headed by some of this country's favorite sports legends. Samsung pledges to raise national awareness and funds for these outstanding charities and to identify how others can also make a difference in the lives of these children and families.



Samsung Recycling DirectSM

All good things come to an end. Let's make sure it's a Green end.

As technology continually evolves, so will your digital lifestyle. When you upgrade your consumer electronics, you will need to recycle your old products responsibly. That's why we're proud to reaffirm our commitment and responsibility to recycle DirectSM using the new Samsung Recycling program launched on October 1st, 2008.

'Eco-friendly' - Samsung

Preserves the nature you live in.

Thinking of you and the environment, Samsung plans for the future. Realizing your hopes for a greener, healthier life for you and the generations that follow, Samsung's environmentally friendly technologies work to make the world a more beautiful place.



Air & Water Conservation



As a leading innovator of environment-friendly products and technologies, Samsung products already drastically reduce the strains on nature's valuable resources. Samsung uses R-600, a natural refrigerant, and cyclopentane insulation in its refrigerators, which do not promote global warming and does not add to the greenhouse effect. Samsung's water-efficient washing machines also use less detergent and water without affecting cleanliness, helping to conserve water.

Use Less, Save More



Samsung products are energy efficient, receiving Energy Grade A+ in the EU and ENERGY STAR in the U.S. Samsung washers with its ceramic heaters use less power, which saves you energy, money, and time. This energy-efficient technology protects you and nature, giving you a greener lifestyle.

Global Recycling



Samsung Electronics is making significant efforts to save the environment and complies with the WEEE (Waste Electrical and Electronic Equipment) directive by joining or establishing the recycling schemes for each country.

Samsung Eco-Friendly System Air Conditioner



Making continuous efforts to stay ecofriendly, Samsung's air conditioners use R-410A, an environmentally friendly refrigerant to help rid the air of pollutants and restrain the use of materials with high global warming potential (GWP). Most Samsung products have received Energy Grade A+ in the EU and ENERGY STAR in the U.S. These energy-efficient air conditioners not only save you money, but help conserve the environment.



iF Product Design Award 2009

As one of the world's oldest & prestigious design competitions, the iF product design award can look back on a rich and long tradition. This seal of fine design quality, has stood for qualitatively outstanding design awards for over 50 years. And Samsung's air conditioner with its design innovations has won the iF product design award for the year 2009.

Samsung air conditioner continues to receive world-wide recognition and awards, proving high quality of the function and beauty to value and satisfy customers' requirements.



Above awards were granted to Samsung's MB air Conditioner



Comfort & Design Award 2008

Organized by Fiera Milano International, the Comfort & Design Award plays the role of intermediary between the Jury and companies participating in the 36th Mostra Convegno Expocomfort / Expobagno. The MCE / EXPOBAGNO 2008 aimed to reward the best product that shows a high level of environmental quality, providing a complete overview of the sector along the lines of "Comfort & Living Technology".

And Samsung air conditioner won the prize conferring a valid and professional recognition on the best products in the ceremony .

2009 Product Line-up

This year's product line-up still supports wide range of choices with all of them equipped with Samsung's advanced technology.

OUTDOOR UNITS

MH040FXEA2B	MH050FXEA2B	MH060FXEA3B	MH070FXEA4B	MH080FXE4B
4.0kW 2 Unit	5.0kW 2 Unit	6.0kW 3 Unit	7.0kW 4 Unit	8.0kW 4 Unit

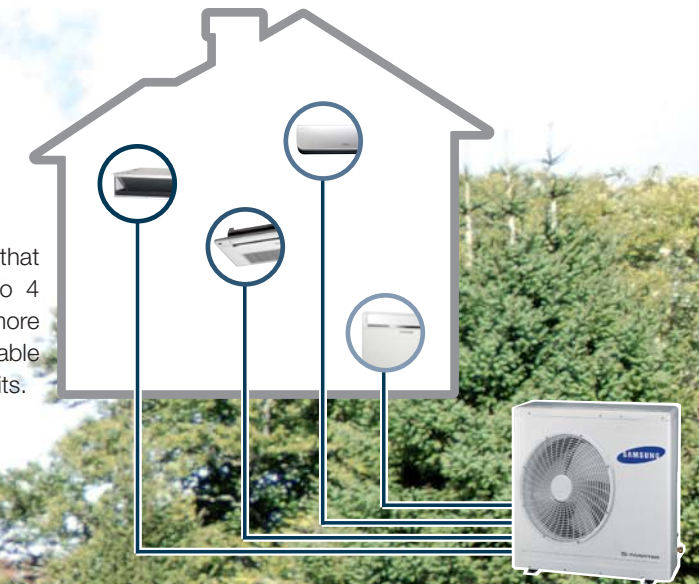
INDOOR UNITS

Type / Capacity	2.0/2.3 kW	2.6 kW	3.5 kW	5.2 kW
MB(White)				
MB(Black)				
Vivace				
Neo Forte				
Console				
Slim 1Way cassette				
Mini 4Way cassette				
Slim Duct				
MSP Duct				

Outdoor Units

4 in 1 System

The Advantage of Samsung's FJM is that a single outdoor unit supports up to 4 indoor units. Use your backyard more wisely with much more space available created by less number of outdoor units.



Powerful enough for an entire residence

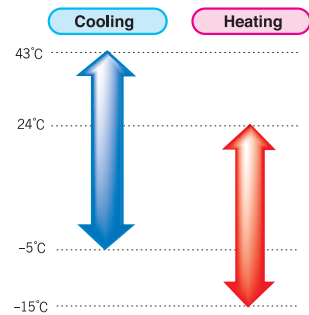
One single outdoor unit can support from single indoor unit to four different indoor units. An outdoor unit that is powerful enough to support that many indoor units, it is not necessarily the noisiest or most power consuming.



Feature

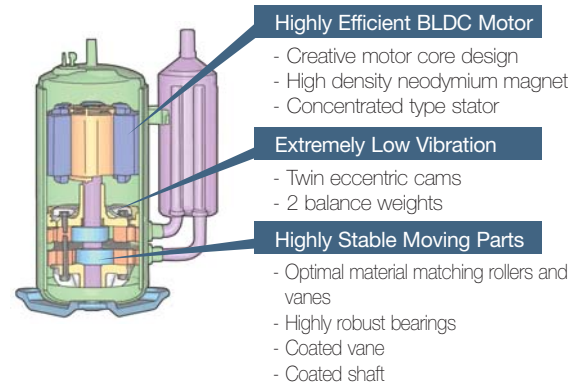
High Performance

Wide Operation Range of Outdoor Temperature



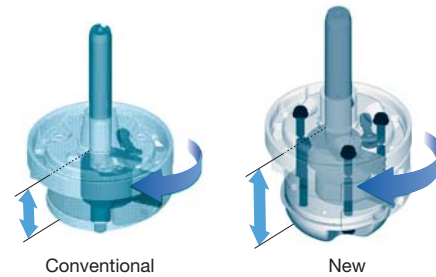
BLDC(Twin Rotary) Compressor

BLDC Compressor is applied on all FJM outdoor models.



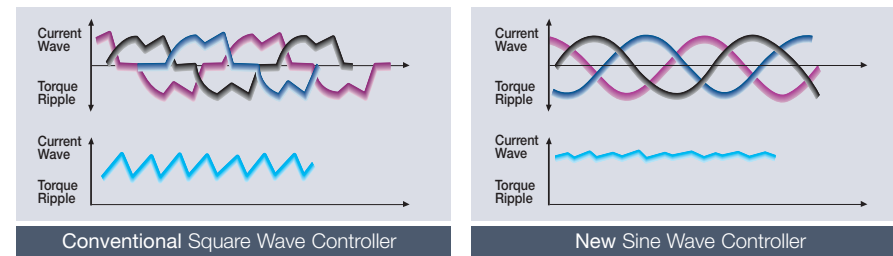
TBR Sine-Wave Compressor

New FJM models have applied the twin BLDC compressor with highly stable moving parts which reduced torque variation by 70% compared to the conventional single BLDC compressor.



Sine Wave Controller

All the FJM models have adopted this newly developed Sine Wave Controller. No ripple in the current wave makes soft acoustic quality and reduces noise.



Felt Structure

New felt has been selected for more quiet compressor operation. Double layered felt structures and the felt cover on the top of the compressor absorb and minimize the noise.



Specification

Model		MH040FXEA2B	MH050FXEA2B	MH060FXEA3B	MH070FXEA4B	MH080FXEA4B		
Max number of connectable indoor units	-	2	2	3	4	4		
Performance	Horse Power	HP	1.5	1.8	2.0	2.5	3.0	
		Capacity	Cooling *1)	kW	3.9	5.0	5.9	7.0
			Btu/h	13,307	17,060	20,131	23,884	27,296
		Heating *2)	kW	4.4	5.7	6.3	8.6	9.3
		Btu/h	15,013	19,448	21,496	29,343	31,732	
Sound	Sound Pressure (Cooling/Heating) *3)	dB(A)	47/48	48/50	49/50	50/51	51/51	
Power	Running	Cooling	A	5.2	6.1	7.3	8.7	10.5
		Heating	A	5.1	6.4	6.4	9.2	10.1
	Nominal Input	Cooling	W	1,140	1,330	1,600	1,900	2,300
		Heating	W	1,120	1,400	1,400	2,000	2,200
Circuit Breaker(MCCB/ELB)	A	9	13.5	14.5	16.6	16.6		
Power Supply	Ø/V/Hz	1/220~240/50	1/220~240/50	1/220~240/50	1/220~240/50	1/220~240/50		
Mode	-	Heat Pump	Heat Pump	Heat Pump	Heat Pump	Heat Pump		
Compressor	Type	-	TWIN BLDC INV.	TWIN BLDC INV.	TWIN BLDC INV.	TWIN BLDC INV.		
	Piston Displacement	cc/Rev	19.52	19.52	19.52	25.18	25.18	
	Output	kW	5.86	5.86	5.86	7.77	7.77	
	Lubricant	Type	-	POE	POE	POE	POE	
		Charging	cc	700	700	700	700	
Refrigerant	Type	-	R410A	R410A	R410A	R410A		
	Factory Charging	kg	1.3	2	2.2	2.8	2.8	
Fan	Type	-	Propeller	Propeller	Propeller	Propeller		
	Output	W	25	40	130	130	130	
	Airflow Rate	m³/min	25.4	32.9	41	44.8	45.4	
Set Size	Net Weight	kg	41	53	59	65	65	
	Shipping Weight	kg	44	57	63	70	70	
	Net Dimensions(WxHxD)	mm	790X548X285	880X638X310	880X798X310	880X798X310	880X798X310	
	Shipping Dimensions(WxDxH)	mm	926X630X382	1,023X695X413	1,023X889X413	1,023X889X413	1,023X889X413	
Piping	Liquid(Flare)	Ø,mm	6.35X2	6.35X2	6.35X3	6.35X4	6.35X4	
Connections	Gas(Flare)	Ø,mm	9.52X2	9.52X1+12.70X1	9.52X2+12.70X1	9.52X2+12.70X2	9.52X2+12.70X2	
	Installation	Max. Length	m	30	30	45	70	70
	Limitation	Max. Height	m	15	15	15	15	15
Operating	Cooling	°C	-5~43	-5~43	-5~43	-5~43	-5~43	
Temp. Range	Heating	°C	-15~24	-15~24	-15~24	-15~24	-15~24	

Notes

*1) Nominal cooling capacities are based on - Indoor temperature: 27°C DB, 19°C WB, Outdoor temperature: 35°C DB, 24°C WB, Equivalent refrigerant piping: 7.5m, Level differences: 0m

*2) Nominal heating capacities are based on - Indoor temperature: 20°C DB, 15°C WB, Outdoor temperature: 7°C DB, 6°C WB, Equivalent refrigerant piping: 7.5m, Level differences: 0m

*3) Sound pressure was acquired in a dead room. Thus actual noise level may be different depending on the installation conditions. - Specifications are subject to change without prior notice for product improvement.

Indoor Units



Stylish design, part of the interior

Samsung's Free Joint Multi air conditioner offers a large variety of indoor units. You can choose from four different types of indoor units, from stylish wall-mounted type to powerful cassette type, depend on your installation site and the air conditioning needs.



MB



Auto Roof Shutter (Dust Free)

This unique air conditioner automatically seals off to prevent dirt infiltration when not in operation.

MPI (Micro Plasma Ion)

The world's first technology that generates active hydrogen atoms together with oxygen ions to improve your Indoor Air Quality. It protects you from harmful particles and viruses existing in the air.

DNA Filter

It is a new technology that screens selectively for only toxic agents. This enables a smarter and effective air management compared to other filters.

Good'sleep II

Innovative technology developed to control the air temperature during your sleep and maintain optimum skin temperature to enjoy a comfortable sleep and also a refreshed wake up.

Vivace



MPI (Micro Plasma Ion)

The world's first technology that generates active hydrogen atoms together with oxygen ions to improve your Indoor Air Quality. It protects you from harmful particles and viruses existing in the air.

Good'sleep II

Innovative technology developed to control the air temperature during your sleep and maintain optimum skin temperature to enjoy a comfortable sleep and also a refreshed wake up.

Mirror Design

Add chic & graceful image

Slim Solution

Compact Size & Light Weight

Specification

Model		MH026FBEA (White)	MH035FBEA (White)	MH052FBEA (White)		
		MH026FBES (Black)	MH035FBES (Black)			
Performance	Cooling *1)	kW	2.6	3.5	5.2	
		Btu/h	8,871	11,942	17,742	
	Heating *2)	kW	2.9	3.8	5.6	
		Btu/h	9,895	12,966	19,107	
Sound	Sound Pressure (High/Low) *3)	dB(A)		31/20	35/21	40/30
Power	Fan	Type	Cross Flow Fan			
		Airflow Rate(Cool/Heat)	m³/min			
	Running Current	Cooling/Heating	A			
	Power Input	Cooling/Heating	W			
Power Supply		Ø/V/Hz				
Mode		Ø/V/Hz				
Piping	Connecting Pipe	Liquid(Flare)	Ø,mm			
		Gas(Flare)	Ø,mm			
		Drain	Ø,mm			
			ID,mm			
Set Size	Net Weight	kg				
	Shipping Weight	kg				
	Net Dimensions (WxHxD)	mm				
	Shipping Dimensions (WxHxD)	mm				

Notes

*1) Nominal cooling capacities are based on - Indoor temperature: 27°C DB, 19°C WB, Outdoor temperature: 35°C DB, 24°C WB, Equivalent refrigerant piping: 7.5m, Level differences: 0m

*2) Nominal heating capacities are based on - Indoor temperature: 20°C DB, 15°C WB, Outdoor temperature: 7°C DB, 6°C WB, Equivalent refrigerant piping: 7.5m, Level differences: 0m

*3) Sound pressure was acquired in a dead room. Thus actual noise level may be different depending on the installation conditions. - Specifications are subject to change without prior notice for product improvement.

Specification

Model		MH020FVEA	MH026FVEA	MH035FVEA	MH052FVEA	
Performance	Cooling *1)	kW	2	2.6	3.5	5.2
		Btu/h	6,824	8,871	11,942	17,742
	Heating *2)	kW	2.2	2.9	3.8	5.6
		Btu/h	7,506	9,895	12,966	19,107
Sound	Sound Pressure (High/Low) *3)	dB(A)		31/21	35/21	40/30
Power	Fan	Type	Cross Flow Fan			
		Airflow Rate(Cool/Heat)	m³/min			
	Running Current	Cooling/Heating	A			
	Power Input	Cooling/Heating	W			
Power Supply		Ø/V/Hz				
Mode		Ø/V/Hz				
Piping	Connecting Pipe	Liquid(Flare)	Ø,mm			
		Gas(Flare)	Ø,mm			
		Drain	Ø,mm			
			ID,mm			
Set Size	Net Weight	kg				
	Shipping Weight	kg				
	Net Dimensions (WxHxD)	mm				
	Shipping Dimensions (WxHxD)	mm				

Notes

*1) Nominal cooling capacities are based on - Indoor temperature: 27°C DB, 19°C WB, Outdoor temperature: 35°C DB, 24°C WB, Equivalent refrigerant piping: 7.5m, Level differences: 0m

*2) Nominal heating capacities are based on - Indoor temperature: 20°C DB, 15°C WB, Outdoor temperature: 7°C DB, 6°C WB, Equivalent refrigerant piping: 7.5m, Level differences: 0m

*3) Sound pressure was acquired in a dead room. Thus actual noise level may be different depending on the installation conditions. - Specifications are subject to change without prior notice for product improvement.

Neo Forte



Good'sleep II

Innovative technology developed to control the air temperature during your sleep and maintain optimum skin temperature to enjoy a comfortable sleep and also a refreshed wake up.

Flush Front Panel

Clean-Cut Front Panel + Silver Accent Line



Specification

Model		MH020FNEA	MH026FNEA	MH035FNEA	MH052FNEA		
Performance	Cooling * ¹⁾	kW	2	2.6	3.5	5.2	
		Btu/h	6,824	8,871	11,942	17,742	
	Heating * ²⁾	kW	2.2	2.9	3.8	5.6	
		Btu/h	7,506	9,895	12,966	19,107	
Sound	Sound Pressure (High/Low) * ³⁾	dB(A)		32/23	32/23	36/23	40/30
Power	Fan	Type	-	Cross Flow Fan	Cross Flow Fan	Cross Flow Fan	Cross Flow Fan
		Airflow Rate(Cool/Heat)	m ³ /min	7.73/8	8.31/8.56	9.54/9.93	13.21/14.22
	Running Current	Cooling/Heating	A	0.18/0.18	0.18/0.18	0.19/0.19	0.3/0.3
		Power Input	Cooling/Heating	W	30/30	30/30	35/35
Power Supply		Ø/V/Hz	1/220~240/50	1/220~240/50	1/220~240/50	1/220~240/50	
Mode			-	Heat Pump	Heat Pump	Heat Pump	Heat Pump
Piping	Connecting Pipe	Liquid(Flare)	Ø,mm	6.35	6.35	6.35	6.35
		Gas(Flare)	Ø,mm	9.52	9.52	9.52	12.70
		Drain	Ø,mm	ID 18	ID 18	ID 18	ID 18
Set Size	Net Weight		kg	7.8	7.8	7.8	13.0
	Shipping Weight		kg	9.4	9.4	9.4	16.0
	Net Dimensions (WxHxD)		mm	825X285X189	825X285X189	825X285X189	1,099X315X217
	Shipping Dimensions (WxHxD)		mm	900X349X252	900X349X252	900X349X252	1,137X377X299

Notes

*1) Nominal cooling capacities are based on - Indoor temperature: 27°C DB, 19°C WB, Outdoor temperature: 35°C DB, 24°C WB, Equivalent refrigerant piping: 7.5m, Level differences: 0m

*2) Nominal heating capacities are based on - Indoor temperature: 20°C DB, 15°C WB, Outdoor temperature: 7°C DB, 6°C WB, Equivalent refrigerant piping: 7.5m, Level differences: 0m

*3) Sound pressure was acquired in a dead room. Thus actual noise level may be different depending on the installation conditions. - Specifications are subject to change without prior notice for product improvement.

Console



Slim Design

It can't get any slimmer. This newly introduced console type air conditioner is only 199mm thick, the slimmest on the market. Its slim design easily integrates the unit into your decor.



Black Display

Functional art, the touch screen display is elegant while it maximizes the convenience of control.



MPI (Micro Plasma Ion)

The world's first technology that generates active hydrogen atoms together with oxygen ions to improve your Indoor Air Quality. It protects you from harmful particles and viruses existing in the air.



Silent Operation (23dB)

The silent, yet powerful and efficient cooling and heating system keeps things more comfortable. Silent mode is available in 4 different operating modes: High / Medium / Low / Silence.

INTERIOR DESIGN

ANTI-BACTERIA FILTER

LIGHT WEIGHT UNIT

SILENT MODE

FLEXIBLE PIPE INSTALLATION

WIRELESS REMOTE CONTROL

Specification

Model		MH026FJEA	MH035FJEA	MH052FJEA		
Performance	Cooling * ¹⁾	kW	2.6	3.5	5.2	
		Btu/h	8,871	11,942	17,700	
	Heating * ²⁾	kW	2.9	3.8	5.6	
		Btu/h	9,895	12,966	19,100	
Sound	Sound Pressure (High/Low) * ³⁾	dB(A)		38/23	39/24	44/25
Power	Fan	Type	-	Turbo Fan	Turbo Fan	Turbo Fan
		Airflow Rate(Cool/Heat)	m ³ /min	9.0/10.5	10.5/11.3	11.2/12.6
	Running Current	Cooling/Heating	A	0.25/0.25	0.29/0.29	0.35/0.35
		Power Input	Cooling/Heating	W	30/30	35/35
Power Supply		Ø/V/Hz	1/220~240/50	1/220~240/50	1/220~240/50	
Mode			-	Heat Pump	Heat Pump	Heat Pump
Piping	Connecting Pipe	Liquid(Flare)	Ø,mm	6.35	6.35	6.35
		Gas(Flare)	Ø,mm	9.52	9.52	12.70
		Drain	Ø,mm	ID 18	ID 18	ID 18
Set Size	Net Weight		kg	15.0	15.0	15.0
	Shipping Weight		kg	19.0	19.0	19.0
	Net Dimensions (WxHxD)		mm	720x620x199	720x620x199	720x620x199
	Shipping Dimensions (WxHxD)		mm	810x710x295	810x710x295	810x710x295

Notes

*1) Nominal cooling capacities are based on - Indoor temperature: 27°C DB, 19°C WB, Outdoor temperature: 35°C DB, 24°C WB, Equivalent refrigerant piping: 7.5m, Level differences: 0m

*2) Nominal heating capacities are based on - Indoor temperature: 20°C DB, 15°C WB, Outdoor temperature: 7°C DB, 6°C WB, Equivalent refrigerant piping: 7.5m, Level differences: 0m

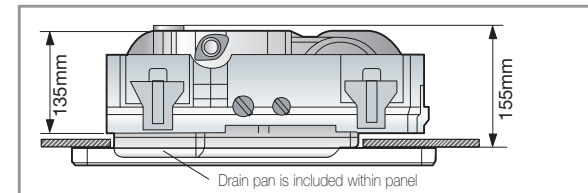
*3) Sound pressure was acquired in a dead room. Thus actual noise level may be different depending on the installation conditions. - Specifications are subject to change without prior notice for product improvement.

Slim 1Way Cassette



Only 135mm thick

Samsung introduces the world's slimmest indoor air conditioner unit. Only 135mm thick, the slim 1Way Cassette air conditioner can be installed practically anywhere.



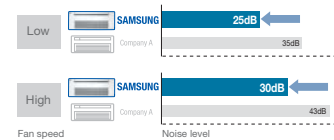
NOTE

Ensure that there is sufficient installation space. Allow at least 170mm for the installation.



Quiet Operation

Samsung's new blade design drastically reduces noise levels, so you can relax in peace and quiet.



- WIDE BLADE
- CEILING SOILING PREVENTION
- HIGH LIFT-UP DRAIN PUMP
- QUICK CONNECTION OF DRAIN PIPE

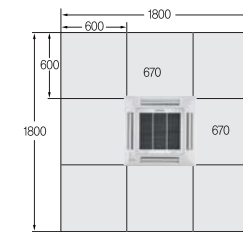
Specification

Model		MH026FSEA	MH035FSEA	
Performance	Cooling *1)	kW	2.6	
		Btu/h	8,800	
	Heating *2)	kW	2.9	
		Btu/h	9,800	
Sound	Sound Pressure (High/Low) *3)	dB(A)		
Power	Fan	Type	Cross Flow Fan	
		Airflow Rate(Cool/Heat)	m³/min	6.2/7.5
	Running Current	Cooling/Heating	A	
		Power Input	W	45
Power Supply	Ø/V/Hz	1/220~240/50		
Mode		Heat Pump		
Piping	Connecting Pipe	Liquid(Flare)	Ø,mm	6.35
		Gas(Flare)	Ø,mm	9.52
		Drain	Ø,mm	VP20(OD 25, ID 20)
Set Size	Net Weight		kg	10.5
	Shipping Weight		kg	13.5
	Net Dimensions (WxHxD)		mm	970x135x410
	Shipping Dimensions (WxHxD)		mm	1,164x212x478
Accessories	Panel	-	PSSMA	
	Drain Pump	-	24/750	

Notes

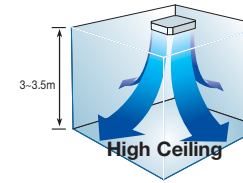
- *1) Nominal cooling capacities are based on - Indoor temperature: 27°C DB, 19°C WB, Outdoor temperature: 35°C DB, 24°C WB, Equivalent refrigerant piping: 7.5m, Level differences: 0m
- *2) Nominal heating capacities are based on - Indoor temperature: 20°C DB, 15°C WB, Outdoor temperature: 7°C DB, 6°C WB, Equivalent refrigerant piping: 7.5m, Level differences: 0m
- *3) Sound pressure was acquired in a dead room. Thus actual noise level may be different depending on the installation conditions.
- Specifications are subject to change without prior notice for product improvement.

Mini 4Way Cassette



Compact Size

The Mini 4Way cassette air conditioner can be installed in one standard ceiling tile (600Wx600H), which can save installation time.



Fan Speed Adjustment

Fan speed can be adjusted according to ceiling height by adjusting dip switch of indoor unit's PCB.

High Energy Efficiency

It's energy efficient. Easy operation coupled with high efficiency provides you with remarkable performance at extremely low cost

- HIGH LIFT-UP DRAIN PUMP
- FRESH AIR INTAKE
- QUICK CONNECTION OF DRAIN PIPE

Specification

Model		MH030FMEA	MH035FMEA	MH052FMEA
Performance	Cooling *1)	kW	3.0	5.2
		Btu/h	10,200	17,700
	Heating *2)	kW	3.4	5.6
		Btu/h	11,600	19,100
Sound	Sound Pressure (High/Low) *3)	dB(A)		
Power	Fan	Type	Turbo Fan	Turbo Fan
		Airflow Rate(Cool/Heat)	m³/min	10.8/11.7
	Running Current	Cooling/Heating	A	0.52/0.52
		Power Input	W	85/85
Power Supply	Ø/V/Hz	1/220~240/50		
Mode		Heat Pump		
Piping	Connecting Pipe	Liquid(Flare)	Ø,mm	6.35
		Gas(Flare)	Ø,mm	9.52
		Drain	Ø,mm	VP 25 (OD 32, ID 25)
Set Size	Net Weight		kg	17.0
	Shipping Weight		kg	20.0
	Net Dimensions (WxHxD)		mm	575x242x575
	Shipping Dimensions (WxHxD)		mm	660x310x635
Accessories	Panel	-	PMSMA	
	Drain Pump	-	Built-in	

Notes

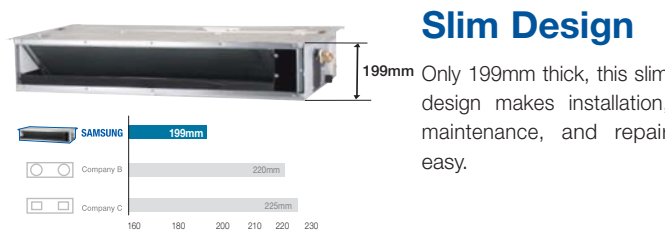
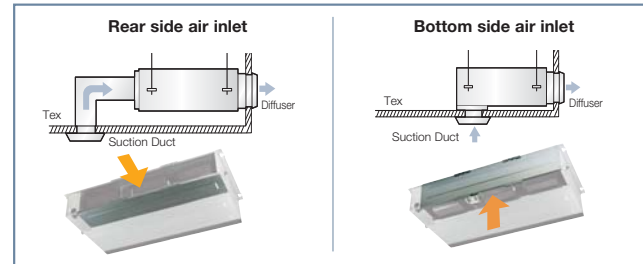
- *1) Nominal cooling capacities are based on - Indoor temperature: 27°C DB, 19°C WB, Outdoor temperature: 35°C DB, 24°C WB, Equivalent refrigerant piping: 7.5m, Level differences: 0m
- *2) Nominal heating capacities are based on - Indoor temperature: 20°C DB, 15°C WB, Outdoor temperature: 7°C DB, 6°C WB, Equivalent refrigerant piping: 7.5m, Level differences: 0m
- *3) Sound pressure was acquired in a dead room. Thus actual noise level may be different depending on the installation conditions.
- Specifications are subject to change without prior notice for product improvement.

Slim Duct



Flexible Installation

The air inlet can be set up on either the bottom or rear of the unit, so there is more flexibility in installation.



Slim Design

Only 199mm thick, this slim design makes installation, maintenance, and repair easy.

- ANTI-BACTERIA FILTER
- EASY FILTER CLEANING
- HIGH LIFT-UP DRAIN PUMP
- SMART PRESSURE CONTROL
- WIRED REMOTE CONTROLLER

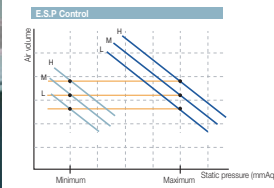
Specification

Model		MH026FEEA	MH035FEEA	
Performance	Cooling *1)	kW	2.6	
		Btu/h	8,800	
	Heating *2)	kW	2.9	
		Btu/h	9,800	
Sound	Sound Pressure (High/Low) *3)	dB(A)	32/27	
Power	Fan	Type	Sirocco Fan	
		Airflow Rate(Cool/Heat)	m³/min	8.6/9.0
	External Static Pressure(Standard/High)	mmAq	2/4	
	Running Current	Cooling/Heating	A	0.4/0.4
	Power Input	Cooling/Heating	W	80/80
Power Supply		Ø/V/Hz	1/220~240/50	
Mode			Heat Pump	
Piping	Connecting Pipe	Liquid(Flare)	Ø,mm	6.35
		Gas(Flare)	Ø,mm	9.52
		Drain	Ø,mm	VP 25 (OD 32, ID 25)
Set Size	Net Weight	kg	26.0	
	Shipping Weight	kg	31.0	
	Net Dimensions (WxHxD)	mm	900x199x600	
	Shipping Dimensions (WxHxD)	mm	1,133x333x722	
Accessories	Drain Pump		MDP-E075SEE	

Notes

- *1) Nominal cooling capacities are based on - Indoor temperature: 27°C DB, 19°C WB, Outdoor temperature: 35°C DB, 24°C WB, Equivalent refrigerant piping: 7.5m, Level differences: 0m
- *2) Nominal heating capacities are based on - Indoor temperature: 20°C DB, 15°C WB, Outdoor temperature: 7°C DB, 6°C WB, Equivalent refrigerant piping: 7.5m, Level differences: 0m
- *3) Sound pressure was acquired in a dead room. Thus actual noise level may be different depending on the installation conditions.
- Specifications are subject to change without prior notice for product improvement.

MSP Duct



Smart Pressure Control

The Smart Pressure Control System adjusts fan speed according to E.S.P (External Static Pressure), so the air conditioner always gives you consistent cooling and heating power regardless of the surrounding environment.

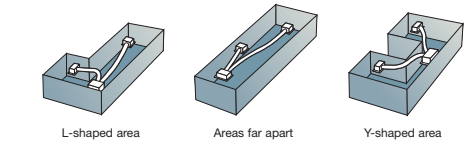


Easy to Maintain

Reduce time and maintenance costs by keeping parts easily accessible.

Flexible Installation

Samsung's MSP Duct air conditioners offer different solutions for any shape room allowing for specific airflow requirements.



- ANTI-BACTERIA FILTER
- EASY FILTER CLEANING
- HIGH LIFT-UP DRAIN PUMP
- SMART PRESSURE CONTROL

Specification

Model		MH052FUEA		
Performance	Cooling *1)	kW	5.2	
		Btu/h	17,742	
	Heating *2)	kW	5.6	
		Btu/h	19,107	
Sound	Sound Pressure (High/Low) *3)	dB(A)	37/33	
Power	Fan	Type	Sirocco Fan	
		Airflow Rate(Cool/Heat)	m³/min	16.3/15.8
	External Static Pressure(Standard/High)	mmAq	6/10	
	Running Current	Cooling/Heating	A	1.04/1.04
	Power Input	Cooling/Heating	W	170/170
Power Supply		Ø/V/Hz	1/220~240/50	
Mode			Heat Pump	
Piping	Connecting Pipe	Liquid(Flare)	Ø,mm	6.35
		Gas(Flare)	Ø,mm	12.70
		Drain	Ø,mm	VP 25 (OD 32, ID 25)
Set Size	Net Weight	kg	29.5	
	Shipping Weight	kg	34.5	
	Net Dimensions (WxHxD)	mm	900x260x480	
	Shipping Dimensions (WxHxD)	mm	1,146x363x584	
Accessories	Drain Pump		MSP-M075SGU3	

Notes

- *1) Nominal cooling capacities are based on - Indoor temperature: 27°C DB, 19°C WB, Outdoor temperature: 35°C DB, 24°C WB, Equivalent refrigerant piping: 7.5m, Level differences: 0m
- *2) Nominal heating capacities are based on - Indoor temperature: 20°C DB, 15°C WB, Outdoor temperature: 7°C DB, 6°C WB, Equivalent refrigerant piping: 7.5m, Level differences: 0m
- *3) Sound pressure was acquired in a dead room. Thus actual noise level may be different depending on the installation conditions.
- Specifications are subject to change without prior notice for product improvement.

Capacity Combination



Capacity Combination

Different installation setting of an outdoor unit and the indoor units can result in different capacity combination for each setting.



Combination Table

MH040FXEA2B

Cooling

Number of Unit	Indoor Unit Combination						Cooling Capacity(W)					Capacity			Power Consumption			Current			EER	EG
	A	B	C	D	%	Total	A	B	C	D	Total	Min. W	Nom. W	Max. MI	Min. W	Nom. W	Max. W	Min. A	Nom. A	Max. A		
1 Unit	2000	-	-	-	51%	2000	2100	-	-	-	2100	1280	2100	2520	400	540	630	2.2	2.5	2.9	3.89	A
	2600	-	-	-	67%	2600	2600	-	-	-	2600	1280	2600	3120	400	750	880	2.2	3.4	4	3.47	A
	3500	-	-	-	90%	3500	3500	-	-	-	3500	1300	3500	4200	400	1160	1240	2.2	5.3	5.7	3.02	B
2 Unit	2000	2000	-	-	103%	4000	1950	1950	-	-	3900	1350	3900	4200	420	1160	1250	2.3	5.3	5.7	3.36	A
	2000	2600	-	-	118%	4600	1696	2204	-	-	3900	1500	3900	4200	420	1140	1250	2.3	5.2	5.7	3.42	A
	2000	3500	-	-	141%	5500	1418	2482	-	-	3900	1500	3900	4200	440	1160	1250	2.4	5.3	5.7	3.36	A
	2600	2600	-	-	133%	5200	1950	1950	-	-	3900	1500	3900	4200	440	1160	1250	2.4	5.3	5.7	3.36	A
	2600	3500	-	-	156%	6100	1662	2238	-	-	3900	1500	3900	4200	440	1140	1250	2.4	5.2	5.7	3.42	A

Multi Split (Wall Mounted Type)

2 Unit	2000	3500	-	-	141%	5500	1418	2482	-	-	3900	1500	3900	4200	440	1160	1250	2.4	5.3	5.7	3.36	A
	2600	2600	-	-	133%	5200	1950	1950	-	-	3900	1500	3900	4200	440	1160	1250	2.4	5.3	5.7	3.36	A

Heating

Number of Unit	Indoor Unit Combination						Heating Capacity(W)					Capacity			Power Consumption			Current			COP	EG
	A	B	C	D	%	Total	A	B	C	D	Total	Min. W	Nom. W	Max. MI	Min. W	Nom. W	Max. W	Min. A	Nom. A	Max. A		
1 Unit	2200	-	-	-	50%	2200	2400	-	-	-	2400	1300	2400	2990	280	800	910	1.5	3.7	4.2	3.00	D
	2900	-	-	-	66%	2900	3100	-	-	-	3100	1300	3100	3450	280	900	1080	1.5	4.1	4.9	3.44	B
	3800	-	-	-	86%	3800	3800	-	-	-	3800	1300	3800	4370	280	1160	1420	1.5	5.3	6.5	3.28	C
2 Unit	2200	2200	-	-	100%	4400	2200	2200	-	-	4400	1500	4400	4700	300	1160	1390	1.6	5.3	6.4	3.79	A
	2200	2900	-	-	116%	5100	1898	2502	-	-	4400	1500	4400	4700	300	1160	1420	1.6	5.3	6.5	3.79	A
	2200	3800	-	-	136%	6000	1613	2787	-	-	4400	1500	4400	4700	300	1160	1490	1.6	5.3	6.8	3.79	A
	2900	2900	-	-	132%	5800	2200	2200	-	-	4400	1500	4400	4700	300	1160	1490	1.6	5.3	6.8	3.79	A
	2900	3800	-	-	152%	6700	1904	2496	-	-	4400	1500	4400	4700	300	1120	1490	1.6	5.1	6.8	3.93	A

Multi Split (Wall Mounted Type)

2 Unit	2200	3800	-	-	136%	6000	1613	2787	-	-	4400	1500	4400	4700	300	1160	1490	1.6	5.3	6.8	3.79	A
	2900	2900	-	-	132%	5800	2200	2200	-	-	4400	1500	4400	4700	300	1160	1490	1.6	5.3	6.8	3.79	A

MH050FXEA2B

Cooling

Number of Unit	Indoor Unit Combination						Cooling Capacity(W)					Capacity			Power Consumption			Current			EER	EG
	A	B	C	D	%	Total	A	B	C	D	Total	Min. W	Nom. W	Max. MI	Min. W	Nom. W	Max. W	Min. A	Nom. A	Max. A		
1 Unit	2000	-	-	-	40%	2000	2400	-	-	-	2400	1280	2400	2880	400	730	880	1.9	3.3	4	3.29	A
	2600	-	-	-	52%	2600	2600	-	-	-	2600	1280	2600	3120	400	800	960	1.9	3.7	4.4	3.25	A
	3500	-	-	-	70%	3500	3500	-	-	-	3500	1280	3500	4200	400	1090	1310	1.9	5	6	3.21	A
	5200	-	-	-	104%	5200	5000	-	-	-	5000	1300	5000	5200	400	1660	1740	1.9	7.6	8	3.01	B
2 Unit	2000	2000	-	-	80%	4000	2000	2000	-	-	4000	1350	4000	4800	420	1245	1490	2	5.7	6.8	3.21	A
	2000	2600	-	-	92%	4600	2000	2600	-	-	4600	1350	4600	5200	420	1430	1720	2	6.5	7.9	3.22	A
	2000	3500	-	-	110%	5500	1818	3182	-	-	5000	1350	5000	5400	420	1490	1780	2	6.8	8.1	3.36	A
	2000	5200	-	-	144%	7200	1389	3611	-	-	5000	1500	5000	5400	440	1380	1800	2.1	6.3	8.2	3.62	A
	2600	2600	-	-	104%	5200	2500	2500	-	-	5000	1500	5000	5400	440	1500	1780	2.1	6.9	8.1	3.33	A
	2600	3500	-	-	122%	6100	2131	2869	-	-	5000	1500	5000	5400	440	1500	1780	2.1	6.9	8.1	3.33	A
	2600	5200	-	-	156%	7800	1667	3333	-	-	5000	1500	5000	5400	440	1330	1800	2.1	6.1	8.2	3.76	A
	3500	3500	-	-	140%	7000	2500	2500	-	-	5000	1500	5000	5400	440	1500	1780	2.1	6.9	8.1	3.33	A

Heating

Number of Unit	Indoor Unit Combination						Heating Capacity(W)					Capacity			Power Consumption			Current			COP	EG
	A	B	C	D	%	Total	A	B	C	D	Total	Min. W	Nom. W	Max. MI	Min. W	Nom. W	Max. W	Min. A	Nom. A	Max. A		
1 Unit	2200	-	-	-	39%	2200	2500	-	-	-	2500	1300	2500	2990	320	880	1010	1.7	4	4.6	2.84	D
	2900	-	-	-	51%	2900	2900	-	-	-	2900	1300	2900	3340	320	1030	1290	1.7	4.7	5.9	2.82	D
	3800	-	-	-	67%	3800	3800	-	-	-	3800	1300	3800	4370	320	1300	1620	1.7	5.9	7.4	2.92	D
	5600	-	-	-	98%	5600	5400	-	-	-	5400	1450	5400	5600	340	1810	2060	1.8	8.3	9.4	2.98	D
	2200	2200	-	-	77%	4400	2200	2200	-	-	4400	1450	4400	4750	350	1220	1390	1.9	5.6	6.4	3.61	A
2 Unit	2200	2900	-	-	89%	5100	2200	2900	-	-	5100	1450	5100	5460	350	1410	1610	1.9	6.5	7.4	3.62	A
	2200	3800	-	-	105%	6000	2090	3610	-	-	5700	1500	5700	6300	350	1520	1950	1.9	7	8.9	3.75	A
	2200	5600	-	-	137%	7800	1608	4092	-	-	5700	1500	5700	6400	350	1440	1830	1.9	6.6	8.4	3.96	A
	2900	2900	-	-	102%	5800	2850	2850	-	-	5700	1500	5700	6300	350	1550	2060	1.9	7.1	9.4	3.68	A
	2900	3800	-	-	118%	6700	2467	3233	-	-	5700	1500	5700	6300	350	1480	1940	1.9	6.8	8.9	3.85	A
	2900	5600	-	-	149%	8500	1945	3755	-	-	5700	1500	5700	6400	350	1400	1830	1.9	6.4	8.4	4.07	A
	3800	3800	-	-	133%	7600	2850	2850	-	-	5700	1500	5700	6300	350	1470	1890	1.9	6.7	8.6	3.88	A

Note
Specifications are subject to change without prior notice for product improvement.

MH060FXEA3B

Cooling

Number of Unit	Indoor Unit Combination						Cooling Capacity(W)					Capacity			Power Consumption			Current			EER	EG
	A	B	C	D	%	Total	A	B	C	D	Total	Min. W	Nom. W	Max. MI	Min. W	Nom. W	Max. W	Min. A	Nom. A	Max. A		
1 Unit	2000	-	-	-	34%	2000	2400	-	-	-	2400	1280	2400	2880	400	730	930	2.2	3.3	4.3	3.29	A
	2600	-	-	-	44%	2600	2600	-	-	-	2600	1280	2600	3120	400	790	1010	2.2	3.6	4.6	3.29	A
	3500	-	-	-	59%	3500	3500	-	-	-	3500	1280	3500	4200	400	1070	1370	2.2	4.9	6.3	3.27	A
	5200	-	-	-	88%	5200	5200	-	-	-	5200	1300	5200	5800	400	1620	1900	2.2	7.4	8.7	3.21	A
2 Unit	2000	2000	-	-	68%	4000	2000	2000	-	-	4000	1300	4000	4800	420	1240	1480	2.3	5.7	6.8	3.23	A
	2000	2600	-	-	78%	4600	2000	2600	-	-	4600	1300	4600	5520	420	1410	1680	2.3	6.5	7.7	3.26	A
	2000	3500	-	-	93%	5500	1909	3341	-	-	5250	1300	5250	6290	430	1550	1820	2.3	7.1	8.3	3.39	A
	2000	5200	-	-	122%	7200	1528	3972	-	-	5500	1380	5500	6600	430	1580	1850	2.3	7.2	8.5	3.48	A
	2600	2600	-	-	88%	5200	2600	2600	-	-	5200	1300	5200	5800	420	1620	1800	2.3	7.4	8.2	3.21	A
	2600	3500	-	-	103%	6100	2259	3041	-	-	5300	1300	5300	6400	430	1550	1840	2.3	7.1	8.4	3.42	A
	2600	5200	-	-	132%	7800	1967	3933	-	-	5900	1380	5900	6800	430	1610	1880	2.3	7.4	8.6	3.66	A
	3500	3500	-	-	119%	7000	2725	2725	-													

Combination Table

MH070FXEA4B

Cooling

Number of Unit	Indoor Unit Combination					Cooling Capacity(W)					Capacity			Power Consumption			Current			EER	EG	
	A	B	C	D	%	Total	A	B	C	D	Total	Min. W	Nom. W	Max. MI	Min. W	Nom. W	Max. W	Min. A	Nom. A			Max. A
1 Unit	2000	-	-	-	29%	2000	2400	-	-	-	2400	1350	2400	3000	380	780	950	1.7	3.6	4.3	3.08	B
	2600	-	-	-	37%	2600	2600	-	-	-	2600	1350	2600	3480	390	840	1100	1.8	3.8	5	3.10	B
	3500	-	-	-	50%	3500	3500	-	-	-	3500	1350	3500	4200	400	1130	1580	1.8	5.2	7.2	3.10	B
	5200	-	-	-	74%	5200	5200	-	-	-	5200	1400	5200	6240	420	1520	2160	1.9	7	9.9	3.42	A
2 Unit	2000	2000	-	-	57%	4000	2000	2000	-	-	4000	1500	4000	4800	410	1240	1490	1.9	5.7	6.8	3.23	A
	2000	2600	-	-	66%	4600	2000	2600	-	-	4600	1690	4600	5520	420	1430	1720	1.9	6.5	7.9	3.22	A
	2000	3500	-	-	79%	5500	2000	3500	-	-	5500	1770	5500	6600	430	1710	2050	2	7.8	9.4	3.22	A
	2000	5200	-	-	103%	7200	1944	5056	-	-	7000	1900	7000	8400	580	2180	2520	2.7	10	11.5	3.21	A
	2600	2600	-	-	74%	5200	2600	2600	-	-	5200	1750	5200	6240	420	1660	2000	1.9	7.6	9.2	3.13	B
	2600	3500	-	-	87%	6100	2600	3500	-	-	6100	1820	6100	7320	440	1880	2260	2	8.6	10.3	3.24	A
	2600	5200	-	-	111%	7800	2333	4667	-	-	7000	1900	7000	8400	580	2130	2540	2.7	9.7	11.6	3.29	A
	3500	3500	-	-	100%	7000	3500	3500	-	-	7000	1900	7000	8400	580	2120	2530	2.7	9.7	11.6	3.30	A
	3500	5200	-	-	124%	8700	2816	4184	-	-	7000	1900	7000	8900	580	2110	2540	2.7	9.7	11.6	3.32	A
	5200	5200	-	-	149%	10400	3500	3500	-	-	7000	1900	7000	8900	580	2000	2540	2.7	9.2	11.6	3.50	A
3 Unit	2000	2000	2000	-	86%	6000	2000	2000	2000	-	6000	1810	6000	7200	440	1800	2280	2	8.2	10.4	3.33	A
	2000	2000	2600	-	94%	6600	2000	2000	2600	-	6600	1870	6600	7920	440	1830	2460	2	8.4	11.3	3.61	A
	2000	2000	3500	-	107%	7500	1781	1781	3118	-	6680	1900	6680	8020	580	1835	2410	2.7	8.4	11	3.64	A
	2000	2000	5200	-	131%	9200	1522	1522	3957	-	7000	1900	7000	8900	580	1850	2460	2.7	8.5	11.3	3.78	A
	2000	2600	2600	-	103%	7200	1847	2401	2401	-	6650	1900	6650	7980	580	1830	2410	2.7	8.4	11	3.63	A
	2000	2600	3500	-	116%	8100	1664	2163	3119	-	6740	1900	6740	8080	580	1840	2460	2.7	8.4	11.3	3.66	A
	2000	2600	5200	-	140%	9800	1429	1857	3714	-	7000	1900	7000	8900	580	1880	2460	2.7	8.6	11.3	3.72	A
	2000	3500	3500	-	129%	9000	1516	2652	2652	-	6820	1900	6820	8180	580	1850	2510	2.7	8.5	11.5	3.69	A
	2000	3500	5200	-	153%	10700	1308	2290	3120	-	7000	1900	7000	8900	580	1930	2510	2.7	8.8	11.5	3.63	A
	2600	2600	2600	-	111%	7800	2240	2240	2240	-	6720	1900	6720	8050	580	1840	2420	2.7	8.4	11.1	3.65	A
	2600	2600	3500	-	124%	8700	2029	2029	2732	-	6790	1900	6790	8150	580	1850	2460	2.7	8.5	11.3	3.67	A
	2600	2600	5200	-	149%	10400	1750	1750	3121	-	7000	1900	7000	8900	580	1880	2510	2.7	8.6	11.5	3.72	A
	2600	3500	3500	-	137%	9600	1896	2552	2552	-	7000	1900	7000	8900	580	1880	2460	2.7	8.6	11.3	3.72	A
	3500	3500	3500	-	150%	10500	2330	2330	2330	-	6990	1900	6990	8900	580	1900	2510	2.7	8.7	11.5	3.68	A
4 Unit	2000	2000	2000	2000	114%	8000	1680	1680	1680	1680	6720	1900	6720	8070	580	1850	2460	2.7	8.5	11.3	3.63	A
	2000	2000	2000	2600	123%	8600	1577	1577	1577	2050	6780	1900	6780	8140	580	1880	2460	2.7	8.6	11.3	3.61	A
	2000	2000	2000	3500	136%	9500	1474	1474	1474	2579	7000	1900	7000	8900	580	1900	2460	2.7	8.7	11.3	3.68	A
	2000	2000	2600	2600	131%	9200	1522	1522	1978	1978	7000	1900	7000	8900	580	1880	2460	2.7	8.6	11.3	3.72	A
	2000	2000	2600	3500	144%	10100	1386	1386	1802	2426	7000	1900	7000	8900	580	1900	2510	2.7	8.7	11.5	3.68	A
	2000	2600	2600	2600	140%	9800	1429	1857	1857	1857	7000	1900	7000	8900	580	1900	2460	2.7	8.7	11.3	3.68	A
	2000	2600	2600	3500	153%	10700	1308	1701	1701	2290	7000	1900	7000	8900	580	1930	2550	2.7	8.8	11.7	3.63	A
	2600	2600	2600	2600	149%	10400	1750	1750	1750	1750	7000	1900	7000	8900	580	1900	2550	2.7	8.7	11.7	3.68	A

Note
Specifications are subject to change without prior notice for product improvement.

MH070FXEA4B

Heating

Number of Unit	Indoor Unit Combination					Heating Capacity(W)					Capacity			Power Consumption			Current			COP	EG	
	A	B	C	D	%	Total	A	B	C	D	Total	Min. W	Nom. W	Max. MI	Min. W	Nom. W	Max. W	Min. A	Nom. A			Max. A
1 Unit	2200	-	-	-	26%	2200	2500	-	-	-	2500	1790	2500	3220	580	950	1330	2.7	4.3	6.1	2.63	E
	2600	-	-	-	30%	2600	2900	-	-	-	2900	1820	2900	3680	590	1100	1500	2.7	5	6.9	2.64	E
	3800	-	-	-	44%	3800	3800	-	-	-	3800	1930	3800	4600	600	1250	1810	2.7	5.7	8.3	3.04	D
	5600	-	-	-	65%	5600	5600	-	-	-	5600	2080	5600	6440	610	1670	2370	2.8	7.6	10.8	3.35	C
2 Unit	2200	2200	-	-	51%	4400	2200	2200	-	-	4400	1980	4400	5060	600	1220	1530	2.7	5.6	7	3.61	A
	2200	2900	-	-	59%	5100	2200	2900	-	-	5100	2040	5100	5870	610	1410	1700	2.8	6.5	7.8	3.62	A
	2200	3800	-	-	70%	6000	2200	3800	-	-	6000	2110	6000	6900	610	1760	2110	2.8	8.1	9.7	3.41	B
	2200	5600	-	-	91%	7800	2200	5600	-	-	7800	2200	7800	9130	620	2150	2700	2.8	9.8	12.4	3.63	A
	2900	2900	-	-	67%	5800	2900	2900	-	-	5800	2100	5800	6670	610	1600	1930	2.8	7.3	8.8	3.63	A
	2900	3800	-	-	78%	6700	2900	3800	-	-	6700	2170	6700	8040	610	1940	2330	2.8	8.9	10.7	3.45	B
	2900	5600	-	-	99%	8500	2729	5271	-	-	8000	2200	8000	9600	620	2210	2650	2.8	10.1	12.1	3.62	A
	3800	3800	-	-	88%	7600	3800	3800	-	-	7600	2200	7600	9120	620	2100	2510	2.8	9.6	11.5	3.62	A
	3800	5600	-	-	109%	9400	3283	4837	-	-	8120	2200	8120	9740	620	2250	2700	2.8	10.3	12.4	3.61	A
	5600	5600	-	-	130%	11200	4250	4250	-	-	8500	2200	8500	10200	620	2250	2740	2.8	10.3	12.5	3.78	A
3 Unit	2200	2200	2200	-	77%	6600	2200	2200	2200	-	6600	2170	6600	7590	610	1830	2530	2.8	8.4	11.6	3.61	A
	2200	2200	2900	-	85%	7300	2200	2200	2900	-	7300	2200	7300	8400	620	1880	2590	2.8	8.6	11.9	3.88	A
	2200	2200	3800	-	95%	8200	2200	2200	3800	-	8200	2200	8200	9590	620	1930	2660	2.8	8.8	12.2	4.25	A
	2200	2200	5600	-	116%	10000	1892	1892	4816	-	8600	2200	8600	10300	620	1960	2700	2.8	9	12.4	4.39	A
	2200	2900	2900	-	93%	8000	2200	2900	2900	-	8000	2200	8000	9360	620	1900	2620	2.8	8.7	12	4.21	A
	2200	2900	3800	-	103%	8900	2042	2691	3119	-	8260	2200	8260	9670	620	1930	2660	2.8	8.8	12.2	4.28	A
	2200	2900	5600	-	124%	10700	1768	2331	4501	-	8600	2200	8600	10300	620	1970	2720	2.8	9	12.4	4.37	A
	2200	3800	3800	-	114%	9800	1872	3234	3234	-	8340	2200	8340	9760	620	1950	2690	2.8	8.9	12.3	4.28	A
	2200	3800	5600	-	135%	11600	1631	2817	3120	-	8600	2200	8600	10300	620	2000	2760	2.8	9.2	12.6	4.30	A
	2900	2900	2900	-	101%	8700	2750	2750														

Combination Table

MH080FXEA4B ■ Cooling

Number of Unit	Indoor Unit Combination						Cooling Capacity(W)					Capacity			Power Consumption			Current			EER	EG
	A	B	C	D	%	Total	A	B	C	D	Total	Min. W	Nom. W	Max. MI	Min. W	Nom. W	Max. W	Min. A	Nom. A	Max. A		
1 Unit	2000	-	-	-	25%	2000	2400	-	-	-	2400	1470	2400	3000	380	780	950	1.7	3.6	4.3	3.08	B
	2600	-	-	-	33%	2600	2600	-	-	-	2600	1520	2600	3480	390	840	1100	1.8	3.8	5	3.10	B
	3500	-	-	-	44%	3500	3500	-	-	-	3500	1600	3500	4200	400	1130	1580	1.8	5.2	7.2	3.10	B
	5200	-	-	-	65%	5200	5200	-	-	-	5200	1750	5200	6240	420	1520	2160	1.9	7	9.9	3.42	A
2 Unit	2000	2000	-	-	50%	4000	2000	2000	-	-	4000	1640	4000	4800	410	1240	1490	1.9	5.7	6.8	3.23	A
	2000	2600	-	-	58%	4600	2000	2600	-	-	4600	1690	4600	5520	420	1430	1720	1.9	6.5	7.9	3.22	A
	2000	3500	-	-	69%	5500	2000	3500	-	-	5500	1770	5500	6600	430	1710	2050	2	7.8	9.4	3.22	A
	2000	5200	-	-	90%	7200	2000	5200	-	-	7200	1900	7200	8640	580	2240	2690	2.7	10.3	12.3	3.21	A
	2600	2600	-	-	65%	5200	2600	2600	-	-	5200	1750	5200	6240	420	1660	2000	1.9	7.6	9.2	3.13	B
	2600	3500	-	-	76%	6100	2600	3500	-	-	6100	1820	6100	7320	440	1900	2260	2	8.7	10.3	3.21	A
	2600	5200	-	-	98%	7800	2400	4800	-	-	7200	1900	7200	8640	580	2240	2690	2.7	10.3	12.3	3.21	A
	3500	3500	-	-	88%	7000	3500	3500	-	-	7000	1900	7000	8400	580	2180	2620	2.7	10	12	3.21	A
	3500	5200	-	-	109%	8700	2957	4393	-	-	7350	1900	7350	8820	580	2290	2750	2.7	10.5	12.6	3.21	A
	5200	5200	-	-	130%	10400	3825	3825	-	-	7650	1900	7650	9180	580	2380	2860	2.7	10.9	13.1	3.21	A
3 Unit	2000	2000	2000	-	75%	6000	2000	2000	2000	-	6000	1810	6000	7200	440	1850	2310	2	8.5	10.6	3.24	A
	2000	2000	2600	-	83%	6600	2000	2000	2600	-	6600	1870	6600	7920	440	2000	2500	2	9.2	11.4	3.30	A
	2000	2000	3500	-	94%	7500	2000	2000	3500	-	7500	1900	7500	9000	580	2220	2780	2.7	10.2	12.7	3.38	A
	2000	2000	5200	-	115%	9200	1663	1663	4324	-	7650	1900	7650	9180	580	2190	2730	2.7	10	12.5	3.49	A
	2000	2600	2600	-	90%	7200	2000	2600	2600	-	7200	1900	7200	8640	580	2150	2680	2.7	9.8	12.3	3.35	A
	2000	2600	3500	-	101%	8100	1864	2423	3262	-	7550	1900	7550	9060	580	2150	2690	2.7	9.8	12.3	3.51	A
	2000	2600	5200	-	123%	9800	1573	2046	4091	-	7710	1900	7710	9250	580	2190	2730	2.7	10	12.5	3.52	A
	2000	3500	3500	-	113%	9000	1698	2971	2971	-	7640	1900	7640	9160	580	2190	2730	2.7	10	12.5	3.49	A
	2000	3500	5200	-	134%	10700	1495	2617	3888	-	8000	1900	8000	9300	580	2260	2820	2.7	10.3	12.9	3.54	A
	2600	2600	2600	-	98%	7800	2510	2510	2510	-	7530	1900	7530	9030	580	2110	2640	2.7	9.7	12.1	3.57	A
	2600	2600	3500	-	109%	8700	2274	2274	3061	-	7610	1900	7610	9130	580	2140	2690	2.7	9.8	12.3	3.56	A
	2600	2600	5200	-	130%	10400	1940	1940	3880	-	7760	1900	7760	9300	580	2210	2780	2.7	10.1	12.7	3.51	A
	2600	3500	3500	-	120%	9600	2083	2804	2804	-	7690	1900	7690	9230	580	2180	2730	2.7	10	12.5	3.53	A
	2600	3500	5200	-	141%	11300	1841	2478	3681	-	8000	1900	8000	9300	580	2260	2870	2.7	10.3	13.1	3.54	A
	3500	3500	3500	-	131%	10500	2667	2667	2667	-	8000	1900	8000	9300	580	2260	2820	2.7	10.3	12.9	3.54	A
	3500	3500	5200	-	153%	12200	2295	2295	3410	-	8000	1900	8000	9300	580	2300	2910	2.7	10.5	13.3	3.48	A
4 Unit	2000	2000	2000	2000	100%	8000	1888	1888	1888	1888	7550	1900	7550	9050	580	2140	2690	2.7	9.8	12.3	3.53	A
	2000	2000	2000	2600	108%	8600	1767	1767	1767	2298	7600	1900	7600	9120	580	2140	2690	2.7	9.8	12.3	3.55	A
	2000	2000	2000	3500	119%	9500	1617	1617	1617	2829	7680	1900	7680	9220	580	2180	2730	2.7	10	12.5	3.52	A
	2000	2000	2000	5200	140%	11200	1429	1429	1429	3714	8000	1900	8000	9300	580	2300	2870	2.7	10.5	13.1	3.48	A
	2000	2000	2600	2600	115%	9200	1663	1663	2162	2162	7650	1900	7650	9180	580	2190	2730	2.7	10	12.5	3.49	A
	2000	2000	2600	3500	126%	10100	1531	1531	1990	2679	7730	1900	7730	9280	580	2200	2780	2.7	10.1	12.7	3.51	A
	2000	2000	2600	5200	148%	11800	1356	1356	1763	3525	8000	1900	8000	9300	580	2300	2870	2.7	10.5	13.1	3.48	A
	2000	2000	3500	3500	138%	11000	1455	1455	2545	2545	8000	1900	8000	9300	580	2280	2870	2.7	10.4	13.1	3.51	A
	2000	2600	2600	2600	123%	9800	1573	2046	2046	2046	7710	1900	7710	9250	580	2190	2730	2.7	10	12.5	3.52	A
	2000	2600	2600	3500	134%	10700	1495	1944	1944	2617	8000	1900	8000	9300	580	2260	2820	2.7	10.3	12.9	3.54	A
	2000	2600	3500	3500	145%	11600	1379	1793	2414	2414	8000	1900	8000	9300	580	2300	2870	2.7	10.5	13.1	3.48	A
	2600	2600	2600	2600	130%	10400	1940	1940	1940	1940	7760	1900	7760	9300	580	2220	2780	2.7	10.2	12.7	3.50	A
	2600	2600	2600	3500	141%	11300	1841	1841	1841	2478	8000	1900	8000	9300	580	2300	2870	2.7	10.5	13.1	3.48	A
	2600	2600	3500	3500	153%	12200	1705	1705	2295	2295	8000	1900	8000	9300	580	2300	2910	2.7	10.5	13.3	3.48	A

Note
Specifications are subject to change without prior notice for product improvement.

MH080FXEA4B ■ Heating

Number of Unit	Indoor Unit Combination						Heating Capacity(W)					Capacity			Power Consumption			Current			COP	EG
	A	B	C	D	%	Total	A	B	C	D	Total	Min. W	Nom. W	Max. MI	Min. W	Nom. W	Max. W	Min. A	Nom. A	Max. A		
1 Unit	2200	-	-	-	24%	2200	2500	-	-	-	2500	1790	2500	3220	580	950	1330	2.7	4.3	6.1	2.63	E
	2900	-	-	-	31%	2900	2900	-	-	-	2900	1820	2900	3680	590	1110	1500	2.7	5.1	6.9	2.61	E
	3800	-	-	-	41%	3800	3800	-	-	-	3800	1930	3800	4600	600	1250	1810	2.7	5.7	8.3	3.04	D
	5600	-	-	-	60%	5600	5600	-	-	-	5600	2080	5600	6440	610	1670	2370	2.8	7.6	10.8	3.35	C
2 Unit	2200	2200	-	-	47%	4400	2200	2200	-	-	4400	1980	4400	5060	600	1220	1530	2.7	5.6	7	3.61	A
	2200	2900	-	-	55%	5100	2200	2900	-	-	5100	2040	5100	5870	610	1410	1700	2.8	6.5	7.8	3.62	A
	2200	3800	-	-	65%	6000	2200	3800	-	-	6000	2110	6000	6900	610	1760	2110	2.8	8.1	9.7	3.41	B
	2200	5600	-	-	84%	7800	2200	5600	-	-	7800	2200	7800	9130	620	2150	2580	2.8	9.8	11.8	3.63	A
	2900	2900	-	-	62%	5800	2900	2900	-	-	5800	2100	5800	6670	610	1600	1930	2.8	7.3	8.8	3.63	A
	2900	3800	-	-	72%	6700	2900	3800	-	-	6700	2170	6700	7710	610	1940	2330	2.8	8.9	10.7	3.45	B
	2900	5600	-	-	91%	8500	2729	5271	-	-	8000	2200	8000	9360	620	2210	2600	2.8	10.1	11.9	3.62	A
	3800	3800	-	-	82%	7600	3800	3800	-	-	7600	2200	7600	8740	620	2090	2510	2.8	9.6	11.5	3.64	A
	3800	5600	-	-	101%	9400	3283	4837	-	-	8120	2200	8120	9500	620	2250	2650	2.8	10.3	12.1	3.61	A
	5600	5600	-	-	120%	11200	4250	4250	-	-	8500	2200	8500	9950	620	2340	2750	2.8	10.7	12.6	3.63	A
3 Unit	2200	2200	2200	-	71%	6600	2200	2200	2200	-	6600	2170	6600	7590	610	1830	2220	2.8	8.4	10.2	3.61	A
	2200	2200	2900	-	78%	7300	2200	2200	2900	-	7300	2200	7300	8400	620	1950						



Control Systems

Convenient way to control your space

Samsung's Free Joint Multi Air conditioner with its control systems will be the solution for controlling the temperature of your entire residence. Convenient and easy control systems will help cool down or heat up your house.



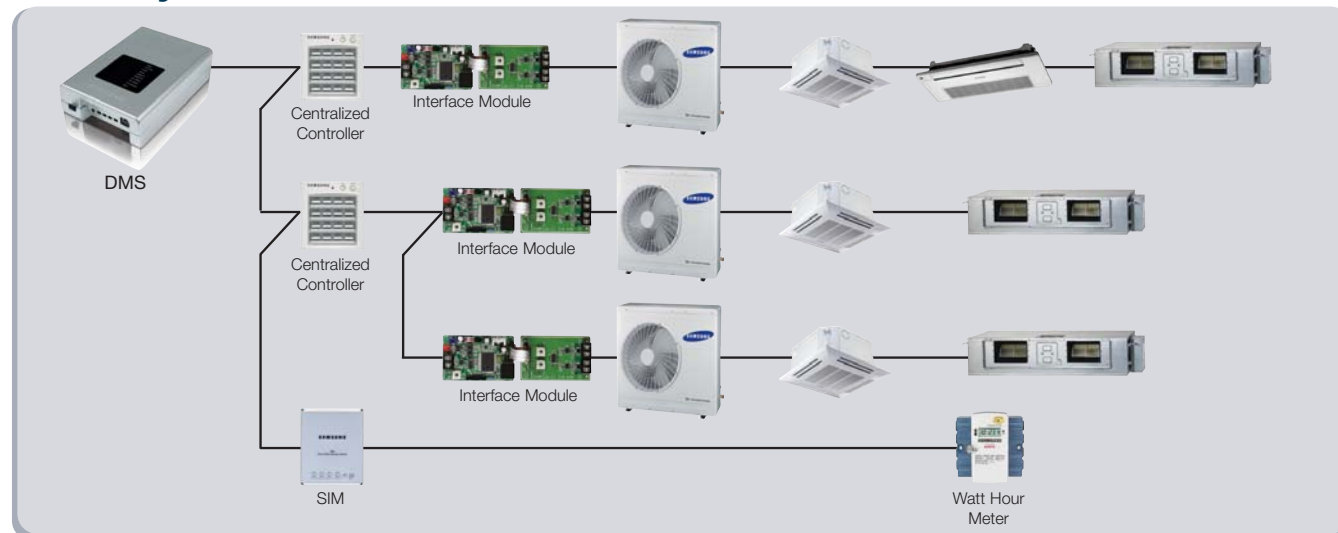


DMS Data Management Server

MIM-D00

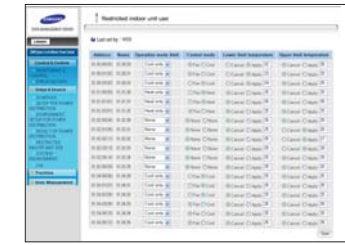
- Built-in web server for PC-independent management and remote access control
- Multiple upper-layer control access (S-NET 3, S-NET Mini, Web-client)
- Individual/Group control of up to 256 indoor units and heat exchange units
- Error history management
- Weekly/Daily schedule control
- Power distribution function
- 2 digital inputs, 2 digital outputs
- Current time management even during power failure (for 24 hours)
- Data storage in non-volatile memory
- Emergency stop function with simple contact interface
- Operation mode lock
- Temperature limit setting

DMS System



Enhanced central management

- Operation mode lock
- Temperature limit setting
- Wireless / wired remote control restriction



Easy Control & Monitoring

- Individual/Group control and monitoring of up to 256 indoor units.
- Operation mode, temperature setting, airflow direction and fan speed.
- Easy multiple/full indoor unit selection.
- Full room temperature display.
- Error history query based on date.



Web Server Function

- Built-in web server.
- Multiple upper-layer control access with prioritized management.
- Remote access control with the static IP address.



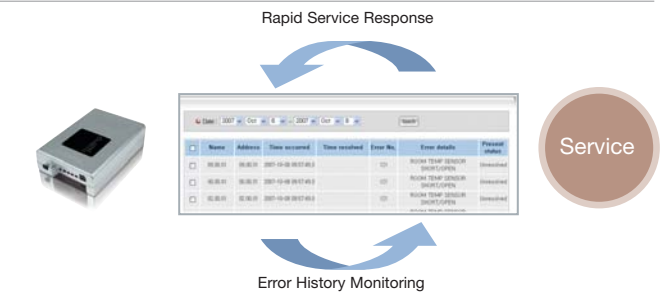
Schedule Control Function

- Up to 256 schedule settings.
- Weekly, Daily or 1-Day schedule control.
- Exception date setting.



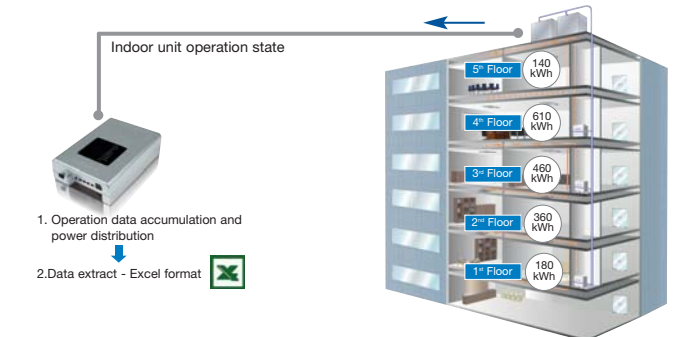
History Management

- Easy service and management with error history.
- Occurrence date, error details, current state.



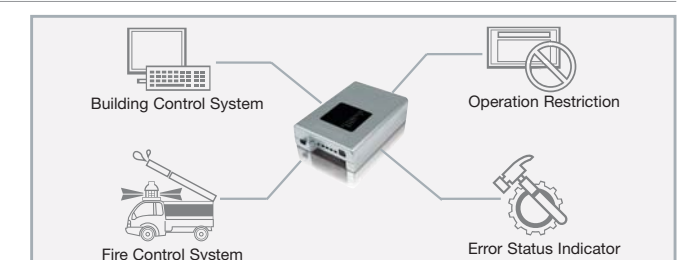
Power Distribution System

- Power distribution to up to 256 indoor units.
- Data query for watt-hour, use time and use ratio.
- File save in Microsoft Excel format.
- 93 days worth of power distribution data storage.



External Contact Interface

- Full indoor unit control with simple contact input. (Emergency/Lock)
- State output (Operation/Error) for synchronous control.

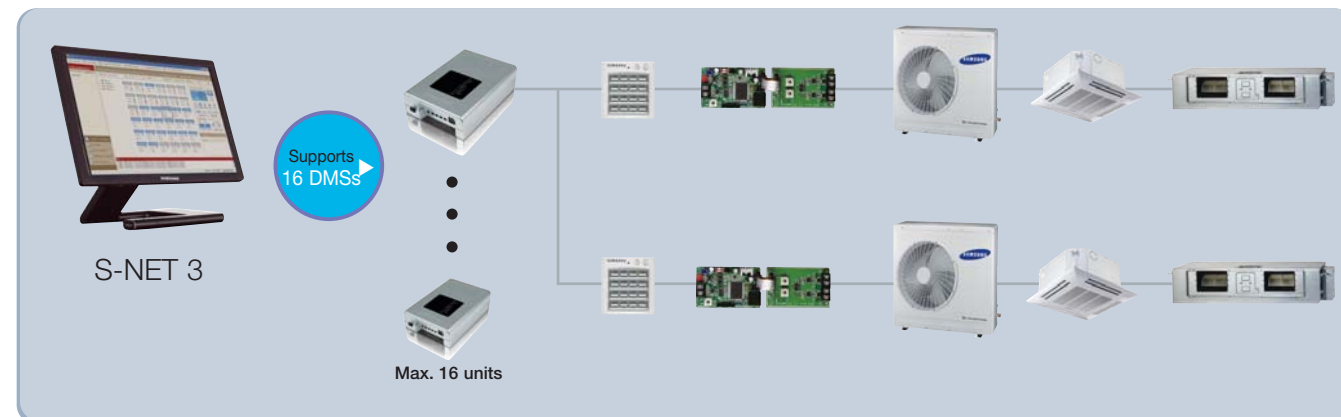




S-NET 3

- Fully integrated PC management software.
- Up to 16 DMSs connection through the Ethernet.
- Central management of up to 4,096 indoor/heat exchange units.
- Schedule/Zone control.
- Error/Operation history management.
- Power distribution management and analysis.
- Automatic update through the Internet.

S-NET 3 System



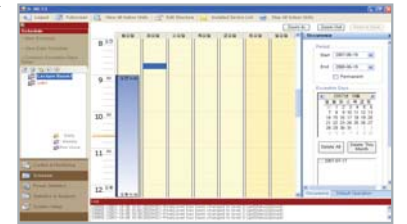
Control and Monitoring

- Control & monitoring of up to 4,096 indoor units
- Heat exchange unit management
- Wireless/wired remote control restriction
- Temperature limit setting
- Multiple/full indoor unit selection
- Icon-based indoor unit display mode



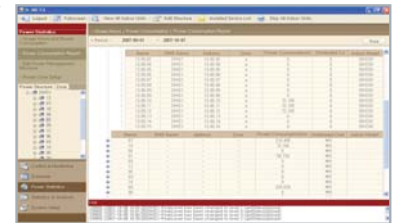
Schedule Control

- Graphical schedule settings
- Weekly, Daily schedule control
- Exception date setting



Zone Management

- Management structure customization regardless of installation structure
- Control zone creation/edition/deletion
- Tree structure zone management control



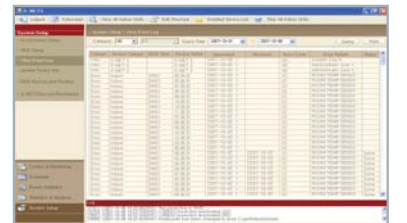
Power Distribution Management

- Data query for power distribution and operation time
- Power distribution report generation and print
- Time section setting for different electricity rates
- Group setting for power distribution summation



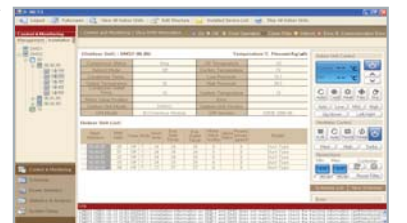
History Management

- Error/Event history management
- Indoor unit operation history management
- Report generation and print



Cycle monitoring

- Monitoring outdoor / indoor unit cycle data (Supported for specific outdoor unit models)



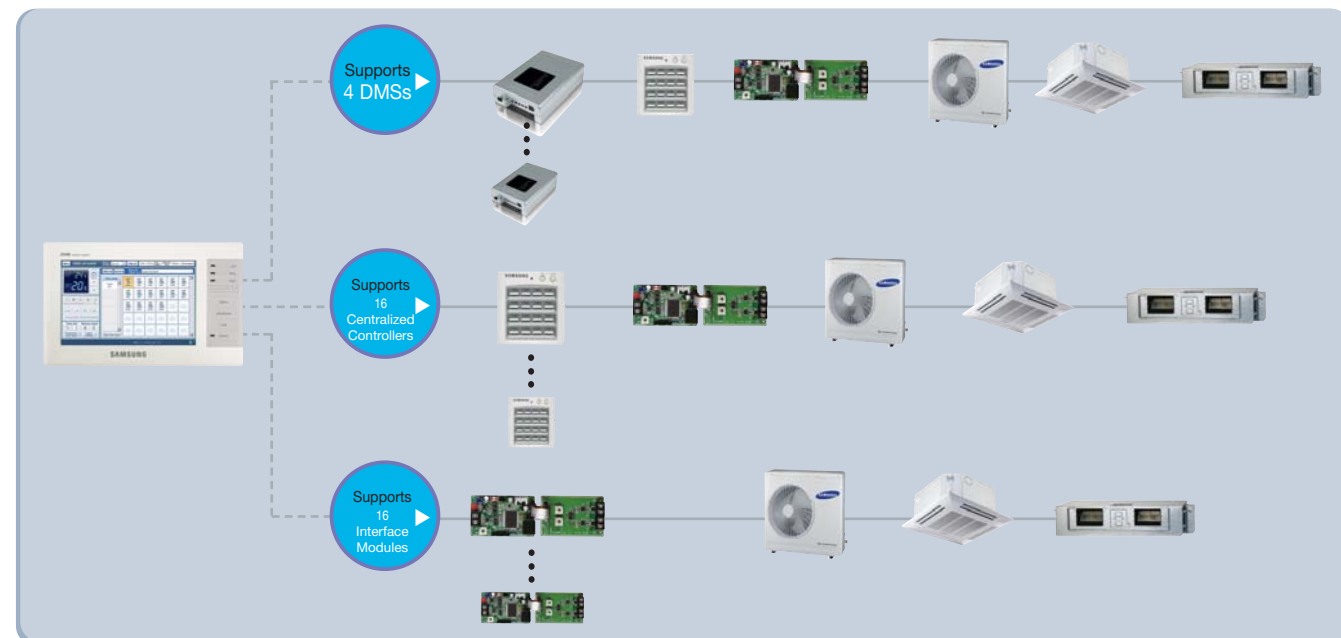


Smart NET Smart Net Control System

S-NET mini

- Dynamic compatibility options (DMS, centralized controller, interface module)
- Control and monitoring of up to 256 indoor units
- Detailed cycling information monitoring
- Schedule function (Weekly, Daily)
- USB keyboard support
- Error display
- 7-inch wide LCD display
- Temperature limit setting
- Touch screen
- Zone control
- Child-lock setting
- Operation mode lock
- External contact control

Dynamic Compatibility Option



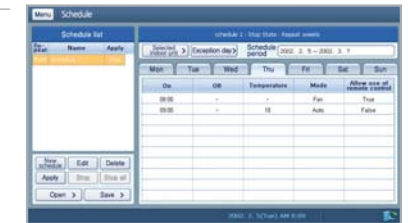
Control and monitoring

- Control & Monitoring of up to 256 indoor units/heat exchange units
- Operation control and monitoring
- Detailed operation cycling information monitoring
- Wireless/wired remote control restriction setting



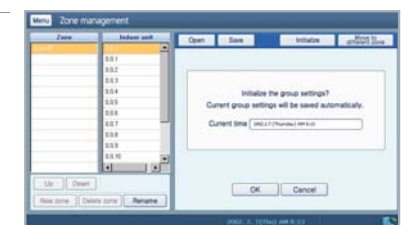
Schedule Control

- Maximum 256 Weekly, Daily schedule control
- Schedule repetition, exception date setting
- Schedule edit (add, edit, delete)
- Detailed operation schedule setting
- Remote control restriction option setting



Zone Management

- Management structure customization regardless of installation structure
- Control zone creation/edition/deletion



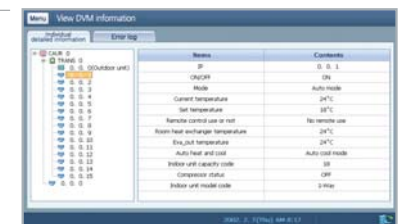
Temperature Limit Setting

- Upper/Lower temperature limit setting



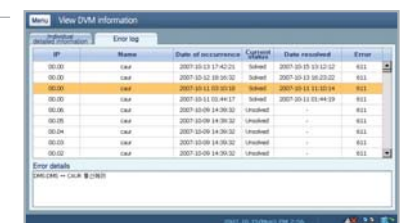
Cycle Monitoring

- Outdoor/Indoor unit cycling information monitoring (supported for specific outdoor unit models)



Error Management

- Error history management
- Error management information query
- Detailed error information query






Centralized Control System

Samsung's centralized control system can control and monitor up to 256 groups of indoor units simultaneously with great convenience and efficiency.

Function Icon

 ON/OFF, OPERATION MODE, FAN SPEED, AIRFLOW, TEMPERATURE SETTING

 INDIVIDUAL AND GROUP CONTROL (MAXIMUM 16 INDOOR UNITS)

 ERROR DISPLAY

 FILTER REPLACEMENT ALARM RESET

Centralized Controller

MCM-A202A



- Maximum 16 group controls (Maximum 256 Indoor units)
- Unified/Individual indoor unit control (On/Off)
- Wireless/wired remote control restriction
- Cooling/Heating mode control
- Indoor unit error display

Function Controller

MCM-A100



- Control and monitoring of up to 16 indoor unit groups

To use Function Controller, it requires to be connected to MCM-A202A



Interface Module

MIM-B13A



- Communicator between indoor/outdoor units and the centralized controller



Individual Control System

Ergonomic and innovative remote controllers feature better design, easy grip, large and soft buttons with easy-to-view displays.

Function Icon

Operation ON/OFF, OPERATION MODE, FAN SPEED, AIRFLOW, TEMPERATURE SETTING

Group INDIVIDUAL AND GROUP CONTROL (MAXIMUM 16 INDOOR UNITS)

Error ERROR DISPLAY

Filter FILTER REPLACEMENT ALARM RESET

Wireless Remote Controller

MR-CH01



- Simple schedule control
- Wide display
- Soft touch button



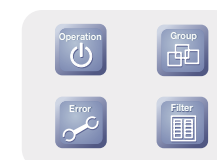
Wired Remote Controller

MWR-WE00 (Multi function)



- Unified controller (A/C, ERV, A/C+ERV)
- Different button permission levels
- Weekly schedule setting (A/C, ERV, A/C+ERV)
- Exception date setting
- Built-in room temperature sensor
- Clear and bright screen with LCD backlight
- Wireless remote control restriction
- Automatic Stop mode
- Sleep and Silent mode
- Child lock

MWR-WS00 (Premium)



- Weekly schedule setting (Maximum 70 schedules)
- Exception date setting
- Built-in room temperature sensor
- Clear and bright screen with LCD backlight
- Temperature limit setting
- Wireless remote control restriction
- Automatic Stop mode
- Sleep and Silent mode
- Child lock

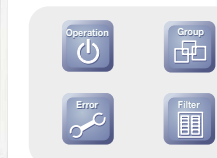
MWR-TH01



- Simple schedule control
- Wireless remote control restriction

Simplified wired remote controller

MWR-SH00



- Mode selection protection

ERV Wired remote controller

MWR-VH01



- Individual and group control (Maximum 16 ERVs)
- On/Off control
- Operation mode (By-Pass, Heat Exchange), fan speed
- Simple schedule control
- Error display
- Synchronous operation with indoor units

Wireless Signal Receiver (for Duct-type indoor unit)

MRK-A00



- ON/OFF control
- Operation indication
- Error Indication
- Filter replacement sign
- Use with receiver wire, MRW-10A

7-day Scheduler

MWR-BS00



- Up to 100 weekly and daily schedule settings
- Schedule setting based on 1-minute time units
- Digital clock display
- Permanent schedule setting storage
- Current time protection from blackout (maximum 3 days)
- Use with wired remote controller, or centralized controller. (MWR-TH01, MCM-A202A)



Building Management System

BMS (Building Management System) makes it possible to control and monitor the air conditioning network using the remote control and monitoring function. Optimum control with BMS-related interface modules keeps the air conditioning system efficient, saves energy, reduces maintenance costs, and extends the life cycle of the units.



MIM-B07

- Interface for Lon-Connection to Lonworks management system
- Quick and easy installation
- Up to 12 indoor units can be controlled
- Communication : RS485 to Lonworks
- Upper physical layer : FTT-10A



BMS Control Function

- On/Off control
- Temperature setting
- Operation mode
- Fan speed

Monitoring Function

- On/Off
- Operation mode
- Room temperature
- Error information

KeyTag Guest Room Management System

The Guest Room Management System is a smart way to save energy and money. When the Key Tag is in place, the air conditioner is activated. When the Key Tag is removed, the air conditioner switches off. Now you can avoid cooling an unoccupied room and save energy.



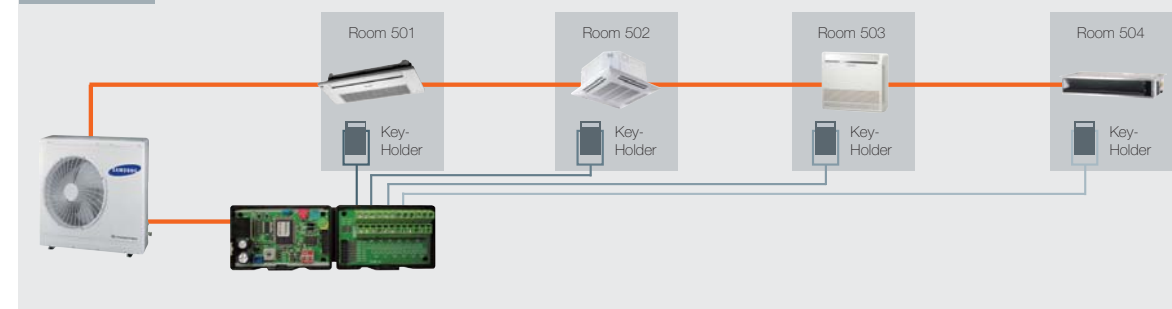
Key Tag Interface Module

MIM-B02

- Indoor unit control by external contact signals
- Individual/Group control of up to 16 indoor units
- Combinational use with sensor/timer/emergency inputs



Example



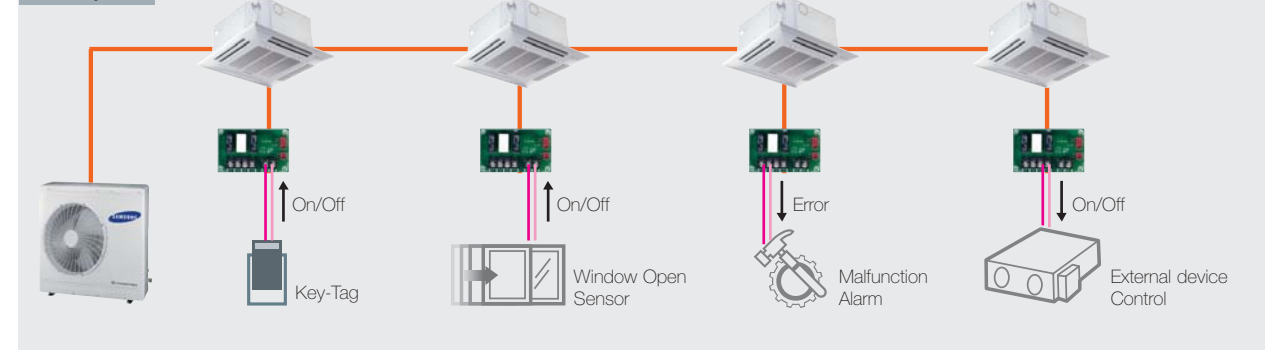
External Contact Interface Module

MIM-B14

- Direct indoor unit control by external contact signal
- Window-synchronized indoor unit control
- Emergency control with simple contact input
- Indoor unit operation/error state output through relay contacts



Example

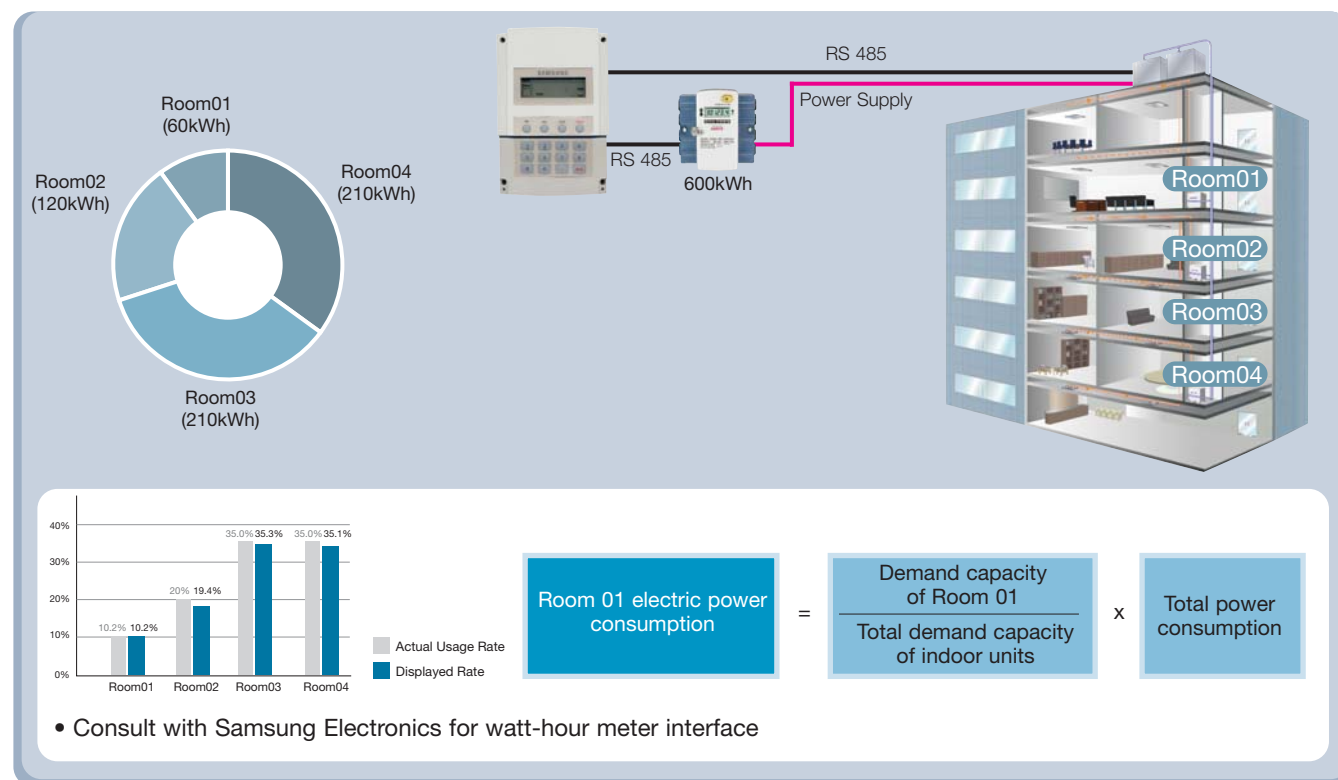


(Wall mounted type indoor unit : Only EEV including model supports state output function)

Power Distribution Unit

MCM-B102

- Real-time power distribution for one indoor/outdoor system.
- Power distribution to maximum 48 indoor units.
- Communication error display.
- Total system power consumption display.
- Power consumption display of individual indoor units.
- Data storage even during a power failure.



Watt-hour meter Interface Module

MIM-B12

- Exclusive use for DMS power distribution.
- Connection with up to 8 watt-hour meters.
- RS485 interface with watt-hour meters.
- Power consumption display for each watt-hour meter.
- Automatic detection of specified watt-hour meters.



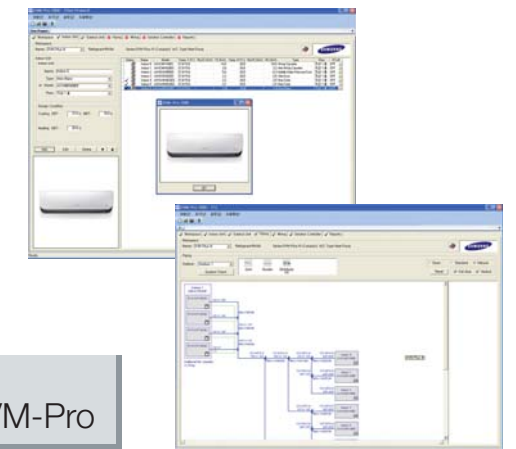
DVM - Pro (DVM, FJM, CAC Equipment Selection Software)

DVM-Pro consists of two kinds of software called DVM-Pro Sales and CAD mode.



DVM-Pro Sales mode

- **Workspace:** Creation 'Project' & 'Workspace (DVM, FJM, CAC)'
- **Indoor Unit:** Indoor unit and accessory selection
- **Outdoor Unit:** Automatic selection and capacity simulation
- **Piping:** Basic, standard or manual selection with system check
- **Wiring:** Automatic diagram with communication wiring of indoor/outdoor/control units and electric power meters
- **Control system:** Automatic control unit selection
- **Report:** Specifications, diagrams and quotation

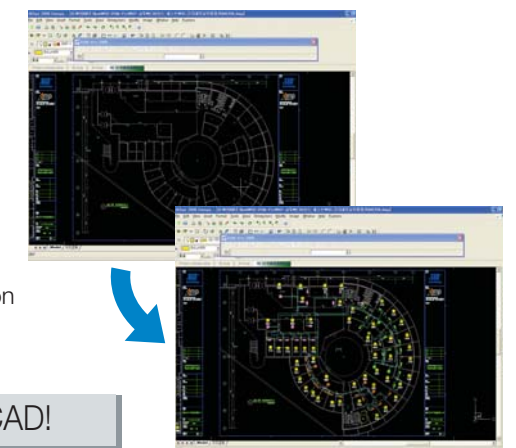


Download!

www.dvmsystem.com → Download Center → DVM-Pro





















DVM-Pro CAD mode

- Quick, easy, precise design
- Compatibility with AutoCAD
- **Automatic calculation:** Refrigerant & drain pipe size
- **Automatic selection:** Refnet joint, header & distributor kit
- **System check:** Installation regulation & refrigerant addition
- **Simulation:** System capacities
- **Easy control system selection**
- **Automatic report:** Piping installation diagram, equipment list & quotation



Contact to Samsung HQ or Distributors for DVM-Pro CAD!

Accessories

Classification	Product	Model	Image	Application Model
Integrated Management System	Controller	DMS		DVM Series, FJM, CAC, ERV
		S-NET 3		DVM Series, FJM, CAC, ERV
		S-NET mini		DVM Series, FJM, CAC
	Interface Module	SIM		DVM Series, FJM
Centralized Control System	Controller	Centralized Controller		DVM Series, FJM, CAC, ERV
		Function Controller		DVM Series, FJM, CAC
	Interface Module	Centralized Control Interface Module		Mini DVM(R410A), DVM PLUS II, DVM PLUS II HR, DVM PLUS III, DVM PLUS III HR, FJM, ERV
Individual Control System	Controller	Wireless Remote Controller		Cassette, Ceiling, Duct (Receiver needed), Console (Included)
		Wired Remote Controller (Multi Function)		Cassette, Wall Mounted, Ceiling, Duct, Console
		Wired Remote Controller (Premium)		Cassette, Wall Mounted, Ceiling, Duct, Console
		Wired Remote Controller		Cassette, Wall Mounted, Ceiling, Duct, Console
		Simplified Wired Remote Controller		Cassette, Wall Mounted, Ceiling, Duct, Console
		ERV Wired Remote Controller		ERV
		Wireless Signal Receiver Kit	Wireless Signal Receiver	
		Receiver Wire		Duct (For Wireless Remote Controller)
	7-day Scheduler		Cassette, Wall Mounted, Ceiling, Duct	
Building Management System	Lonworks Interface Module		MIM-B07	DVM Series, FJM
Guest Room Management System	Key-tag Interface Module		MIM-B02	DVM Series, FJM
	External Contact Interface Module		MIM-B14	CAC, Mini DVM(R410A), DVM PLUS II, DVM PLUS II HR, DVM PLUS III, DVM PLUS III HR, FJM(Non MH***FKEA)
Power Distribution	Power Distribution Unit		MCM-B102	DVM Series, FJM

DVM Series : Mini DVM, DVM, DVM PLUS, DVM HR, DVM PLUS II, DVM PLUS II HR, DVM PLUS III, DVM PLUS III HR

Icon Index

Wall-mounted Type Icon



Auto Roof Shutter
Air conditioner automatically seals off to prevent dirt infiltration.



MPI (Micro Plasma Ion)
MPI generates Hydrogen atoms and Oxygen ions to create healthier air.



DNA Filter
The DNA structure possesses qualities in absorbing and eliminating microscopic carcinogenic agents.



Good'sleep II
Control the air temperature during your sleep to enjoy a comfortable sleep and refreshed wake up.

Cassette Type Icon



WIDE BLADE
Wider blades provide more even cooling power.



CEILING SOILING PREVENTION
Newly designed panel prevents ceiling contamination.



FRESH AIR INTAKE
Optional air intake motor brings in fresh air from outside.



HIGH LIFT-UP DRAIN PUMP
Lift-up condensed water up to 750mm higher than any other competitor.



QUICK CONNECTION OF DRAIN PIPE
Unique drain pipe connection is easy to install.



SUB DUCT
The Sub Duct makes it easy to provide air conditioning to a nearby smaller space.

Duct Type Icon



ANTI-BACTERIA FILTER
Anti-bacteria Filter traps dust particles and suppresses proliferation of molds and bacteria.



EASY FILTER CLEANING
Filter cleaning indicator will let you know when the filter needs to be cleaned.



HIGH LIFT-UP DRAIN PUMP
Lift-up condensed water up to 750mm higher than any other competitor.



SMART PRESSURE CONTROL
Adjusts fan speed to provide constant cooling and heating performance.



WIRED REMOTE CONTROLLER
Default wired remote controller is provided.

Floor & Convertible Type Icon



INTERIOR DESIGN
The clean, modern design complements any decor.



ANTI-BACTERIA FILTER
Anti-bacteria Filter traps dust particles and suppresses proliferation of molds and bacteria.



LIGHT WEIGHT UNIT
Extremely lightweight, so maintenance and installation is easy.



AUTO CHANGEOVER
Automatically changes operation mode according to temperature setting.



FLEXIBLE PIPE INSTALLATION
The pipe can be installed in 6 different places for more placement options.



SILENT MODE
Indoor and outdoor unit operates silently.



WIRELESS REMOTE CONTROLLER
Default wireless remote controller is provided.

Control Systems Icon



ON/OFF, OPERATION MODE, FAN SPEED, AIR FLOW, TEMPERATURE SETTING



INDIVIDUAL AND GROUP CONTROL (MAXIMUM 16 INDOOR UNITS)



ERROR DISPLAY



FILTER REPLACEMENT ALARM RESET